



Flygt 3300

Table of Contents

1 Introduction.....	2
1.1 Specially approved products.....	2
2 Product Description.....	3
2.1 The data plate.....	3
2.2 Approvals.....	4
2.3 Product denomination.....	5
3 Drive Unit.....	7
3.1 Standard.....	7
3.2 Standard.....	8
3.3 Explosion-proof.....	9
3.4 3300.091/181/280.....	10
4 Hydraulic Unit.....	24
4.1 C_ LT.....	24
4.2 C_ LT.....	25
4.3 C_ MT.....	26
4.4 C_ HT.....	27
4.5 C_ HT.....	28
4.6 LL LT.....	29
4.7 NL LT.....	30
4.8 3300.091/181/280.....	31
5 Installation Components.....	37
5.1 CP.....	37
5.2 CP.....	38
5.3 CS.....	39
5.4 CT/NT.....	41
5.5 CZ.....	42
5.6 LL/NL.....	43
5.7 3300.091/181/280.....	44
6 Service Parts.....	47
6.1 3300/091/181/280.....	47

1 Introduction

Purpose of this manual

The purpose of this manual is to provide necessary information on spare parts and accessories order.

Disclaimer

Always use genuine Flygt parts. The use of other spare parts or accessories can invalidate any claims for warranty or compensation. Xylem does not take any responsibility for damages that are caused by the use of non-original parts. For more information, contact your local sales and service representative.

Data for ordering spare parts

The following information is needed for spare part orders:

- Serial number of the product
- Part number
- Quantity of bulk material, see * in tables

1.1 Specially approved products

Qualification of personnel

Only Xylem or Xylem-authorized service personnel may undertake repair work on specially approved products.

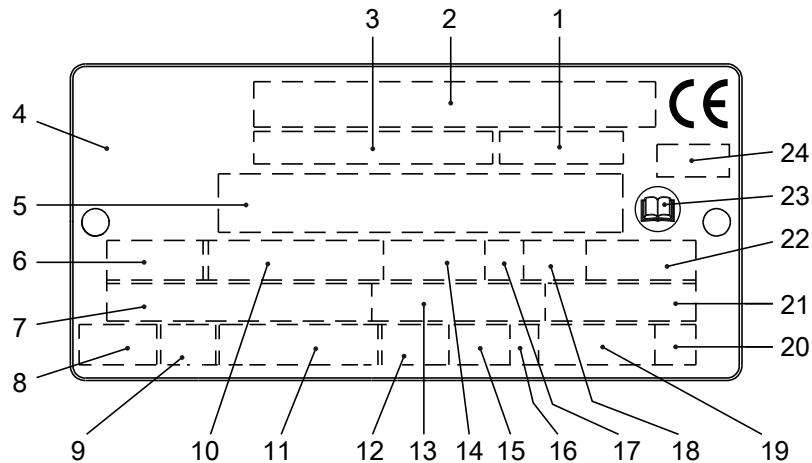
Dimensional accuracy inspection

Spare parts marked with (Ex) after the part number are subject to dimensional accuracy inspection when used in specially approved products.

2 Product Description

2.1 The data plate

The data plate is a metal label that is located on the main body of the products. The data plate lists key product specifications. Specially approved products also have an approval plate.



1. Curve code or Propeller code
2. Serial number
3. Product number
4. Country of origin
5. Additional information
6. Phase; type of current; frequency
7. Rated voltage
8. Thermal protection
9. Thermal class
10. Rated shaft power
11. International standard
12. Degree of protection
13. Rated current
14. Rated speed
15. Maximum submergence
16. Direction of rotation: L=left, R=right
17. Duty class
18. Duty factor
19. Product weight
20. Locked rotor code letter
21. Power factor
22. Maximum ambient temperature
23. Read installation manual
24. Notified body, only for EN-approved Ex products

Figure 1: The data plate

WIS006257A

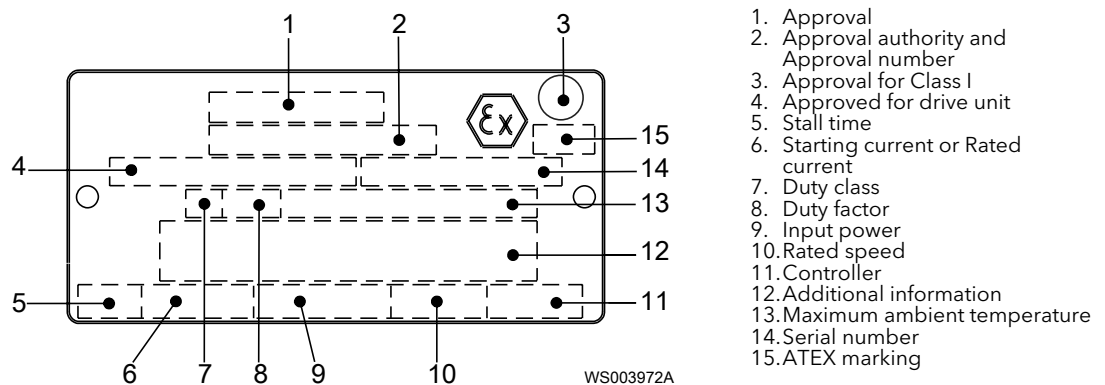
2.2 Approvals

Product approvals for hazardous locations

Pump	Approval
3300.091	European Norm (EN) <ul style="list-style-type: none"> • ATEX Directive • EN 60079-0:2009, EN 60079-1:2007, EN 13463-1:2009, EN 13463-5:2011 • Ex I M2 c Ex d I Mb • Ex II 2 G c Ex d IIB T4 Gb
	EN approval for cable entry: <ul style="list-style-type: none"> • Certificate number: INERIS 02ATEX9008 U • Ex II 2 G Ex d IIC Gb or I M2 Ex d I Mb
	IEC <ul style="list-style-type: none"> • IECEx scheme • IEC 60079-0, IEC 60079-1 • Ex d I • Ex d IIB T4
	FM (FM Approvals) <ul style="list-style-type: none"> • Explosion proof for use in Class I, Div. 1, Group C and D • Dust ignition proof for use in Class II, Div. 1, Group E, F and G • Suitable for use in Class III, Div. 1, Hazardous Locations
	CSA Ex <ul style="list-style-type: none"> • Explosion proof for use in Class I, Div. 1, Group C and D

EN approval plate

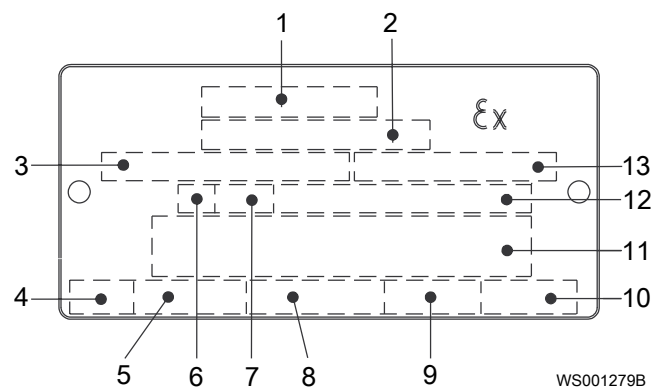
This illustration describes the EN approval plate and the information that is contained in its fields.



IEC approval plate

This illustration describes the IEC approval plate and the information that is contained in its fields.

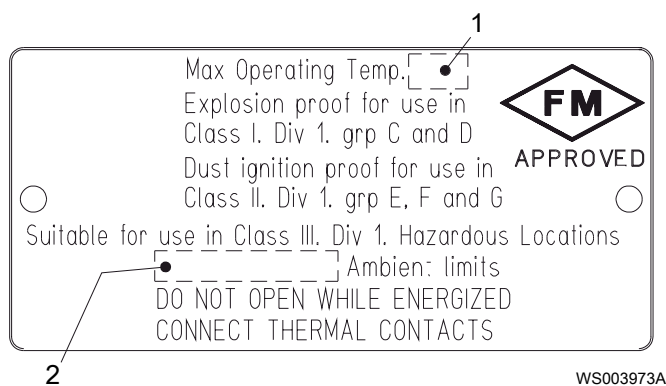
International Norm; not for EU member countries.



1. Approval
2. Approval authority and Approval number
3. Approved for drive unit
4. Stall time
5. Starting current or Rated current
6. Duty class
7. Duty factor
8. Input power
9. Rated speed
10. Controller
11. Additional information
12. Maximum ambient temperature
13. Serial number

FM approval plate

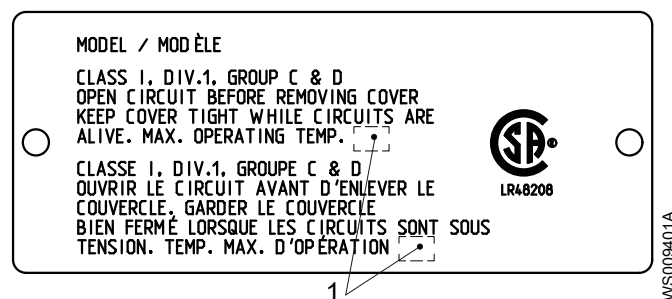
This illustration describes the FM approval plate and the information that is contained in its fields.



1. Temperature class
2. Maximum ambient temperature

CSA approval plate

This illustration describes the CSA approval plate and the information that is contained in its fields.



1. Temperature class

2.3 Product denomination

Reading instruction

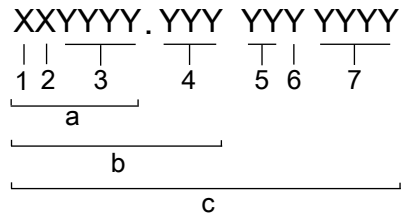
In this section, code characters are illustrated accordingly:

X = letter

Y = digit

The different types of codes are marked up with a, b and c. Code parameters are marked up with numbers.

Codes and parameters

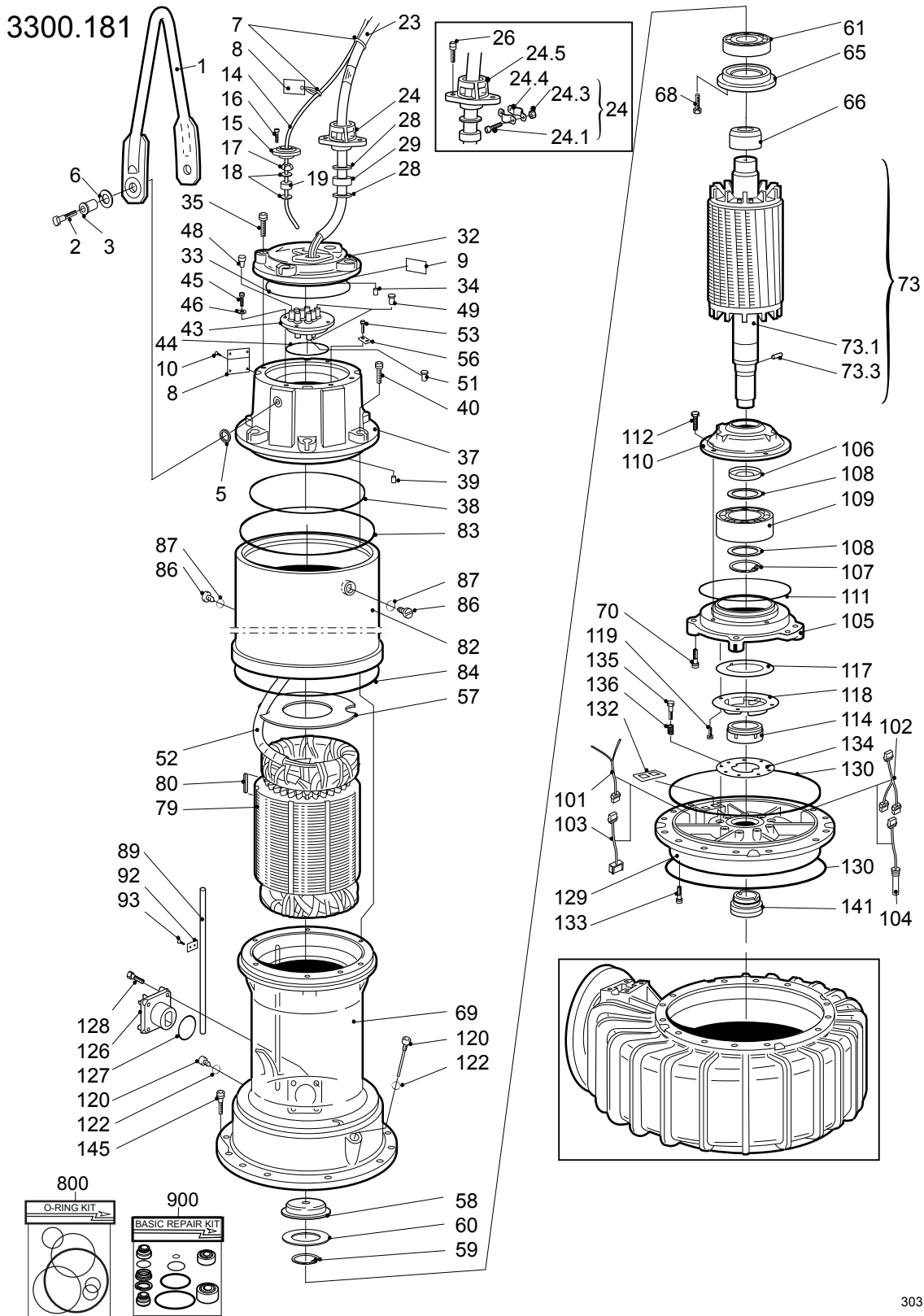


WS006265B

Type of Callout	Number	Indication
Type of code	a	Sales denomination
	b	Product code
	c	Serial number
Parameter	1	Hydraulic end
	2	Type of installation
	3	Sales code
	4	Version
	5	Production year
	6	Production cycle
	7	Running number

3 Drive Unit

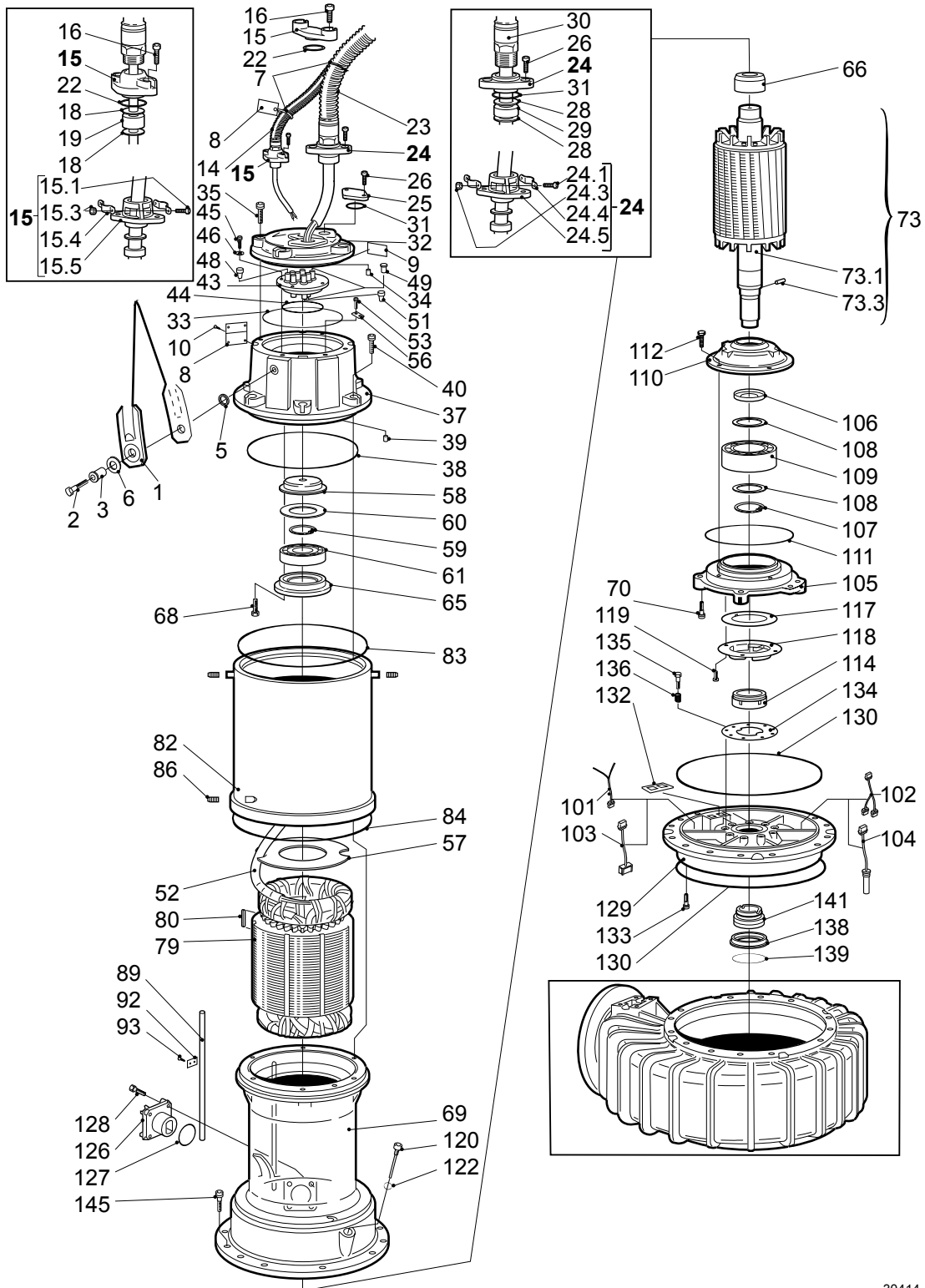
3.1 Standard



30312

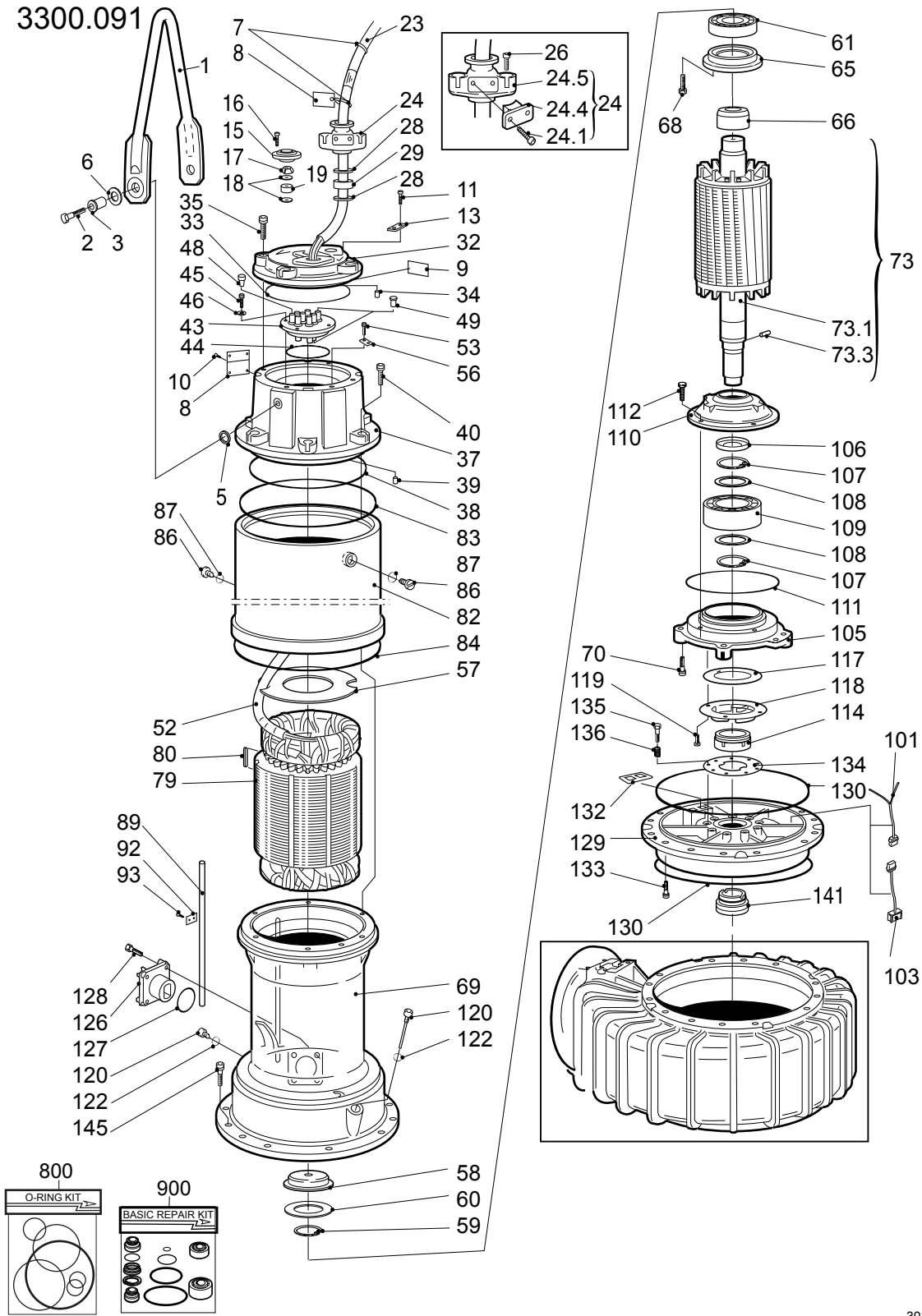
3.2 Standard

3300.280



30414

3.3 Explosion-proof



30311

3.4 3300.091/181/280

Pos. No	Part. No	Type	Denomination	Qty/Version		
				091	181	280
1	342 10 01		Lifting handle compl	1	1	
1	395 51 00		Lifting handle compl			1
2	84 34 07		Hexagon head screw M16X60-A2-70	2	2	
2	83 04 58		Hex.socket hd screw M16X60-A4-80			2
3	342 20 00		Sleeve	2	2	
3	342 20 01		Sleeve			2
5	342 21 00		Plain washer	2	2	
5	342 21 01		Plain washer			2
6	83 38 94		Disc spring B-56X28,5X2-1	2	2	
6	83 40 31		Disc spring B-56X28,5X2-1			2
7	83 45 59		Cable tie 200X2.4 PA 6/6 -55+105	1	1	1
7	83 45 53		Cable tie		8	8
7	83 45 53		Cable tie			20
7	83 45 53		Cable tie			8
8	630 68 00		Data plate USE 6306801 AS SPARE PART	2	2	2
8	630 69 00		Certificate plate EN	1		
8	630 69 01	(Ex)	Certificate plate IECEX	1		
8	630 70 00		Certificate plate FM	2		
8	801 03 00		Name plate	1		
8	640 76 00		Caution plate			1
9	427 13 00		Marking tape	1	1	1
9	550 24 00		Connection plate	1		
9	698 77 00		Connection plate	1	1	1
9	698 77 00		Connection plate	1		1
9	550 22 00		Connection plate (FLS)	1	1	1
9	426 75 00		Connection plate		1	1
9	550 24 00		Connection plate		1	1
9	550 23 00		Connection plate (CLS)		1	1
9	550 21 00		Connection plate (FLS+CLS)		1	1
9	304 40 00		Marking tape			1
10	82 20 88		Drive screw 4X5-A2/A4	12	10	
10	82 20 88		Drive screw 4X5-A2/A4	4		
10	82 21 73		Drive screw 4X5-A4			6
11	81 41 04		Hexagon head screw M8X20-A2-70	2		
13	303 09 00		Earthing plate FM/PTB	2		
14	94 20 76		Control cable subcab 2X1,5		*	*
15	411 27 00		Entrance flange EN/FM/PTB-APPR.	1		
15	413 70 00		Entrance flange		1	
15	392 14 00		Cover		1	
15	416 68 00		Entrance flange			1
15	392 14 01		Cover			1
15	394 77 33		Motor cable entr.uni			1

Pos. No	Part. No	Type	Denomination	Qty/Version		
				091	181	280
16	82 00 32		Hex.socket hd screw M8X20-A2-70	2		
16	81 41 04		Hexagon head screw M8X20-A2-70		2	
16	83 02 99		Hex.socket hd screw M8X20-A4-70			2
17	398 98 00		Cable clamp PA 12, 10-12 MM	1	1	
18	82 41 08		Plain washer (10)-12 MM	2	2	
18	82 42 36		Plain washer 12.5X35X2-A4-70			2
19	84 35 66		Seal sleeve (10)-12MM	1	1	1
19	84 35 66		Seal sleeve (10)-12MM	1		
22	82 79 24		O-ring 32X5.7 FPM		1	1
22	82 81 56		O-ring 32.2X3 FPM			1
23	94 21 10		Motor cable 4AWG/3-2-1-GC	*		
23	94 21 11		Motor cable SUBCAB 1AWG/3-2-1-GC	*		
23	94 19 84		Motor cable subcab 4G35+S(2X0,5)		*	
24	591 56 03		Motor cable entr.uni	2		
	24,1 82 00 34		Hex.socket hd screw M8X25-A2-70	4		
	24,4 591 55 00		Clamp	2		
	24,5 590 57 00		Entrance flange	1		
24	591 56 03		Motor cable entr.uni	1		
	24,1 82 00 34		Hex.socket hd screw M8X25-A2-70	4		
	24,4 591 55 00		Clamp	2		
	24,5 590 57 00		Entrance flange	1		
24	591 56 02		Motor cable entr.uni	1		
	24,1 82 00 34		Hex.socket hd screw M8X25-A2-70	4		
	24,4 590 64 00		Clamp	2		
	24,5 590 57 00		Entrance flange	1		
24	591 56 01		Motor cable entr.uni	2		
	24,1 82 00 34		Hex.socket hd screw M8X25-A2-70	4		
	24,4 590 65 00		Clamp	2		
	24,5 590 57 00		Entrance flange	1		
24	591 56 01		Motor cable entr.uni	1		
	24,1 82 00 34		Hex.socket hd screw M8X25-A2-70	4		
	24,4 590 65 00		Clamp	2		
	24,5 590 57 00		Entrance flange	1		
24	591 56 00		Motor cable entr.uni	1		
	24,1 82 00 34		Hex.socket hd screw M8X25-A2-70	4		
	24,4 590 66 00		Clamp	2		
	24,5 590 57 00		Entrance flange	1		
24	591 56 02		Motor cable entr.uni	2		
	24,1 82 00 34		Hex.socket hd screw M8X25-A2-70	4		
	24,4 590 64 00		Clamp	2		
	24,5 590 57 00		Entrance flange	1		
24	394 77 16		Motor cable entr.uni		1	
	24,1 81 73 63		Slotted head screw M5X30-A4-70		2	
	24,3 82 23 30		Hexagon nut M5-A4-70		2	

Pos. No	Part. No	Type	Denomination	Qty/Version		
				091	181	280
24	394 77 16		Motor cable entr.uni		2	
	24,1 81 73 63		Slotted head screw M5X30-A4-70		2	
	24,3 82 23 30		Hexagon nut M5-A4-70		2	
24	394 77 14		Motor cable entr.uni		1	
	24,1 81 73 64		Slotted head screw M5X35-A4-70		2	
	24,3 82 23 30		Hexagon nut M5-A4-70		2	
	24,4 306 77 25		Clamp		2	
	24,5 319 66 00		Entrance flange		1	
24	394 77 14		Motor cable entr.uni		2	
	24,1 81 73 64		Slotted head screw M5X35-A4-70		2	
	24,3 82 23 30		Hexagon nut M5-A4-70		2	
	24,4 306 77 25		Clamp		2	
	24,5 319 66 00		Entrance flange		1	
24	394 77 15		Motor cable entr.uni		1	
	24,1 81 73 64		Slotted head screw M5X35-A4-70		2	
	24,3 82 23 30		Hexagon nut M5-A4-70		2	
	24,4 306 77 26		Clamp		2	
	24,5 319 66 00		Entrance flange		1	
24	394 77 15		Motor cable entr.uni		2	
	24,1 81 73 64		Slotted head screw M5X35-A4-70		2	
	24,3 82 23 30		Hexagon nut M5-A4-70		2	
	24,4 306 77 26		Clamp		2	
	24,5 319 66 00		Entrance flange		1	
24	394 77 36		Motor cable entr.uni			2
	24,1 81 73 63		Slotted head screw M5X30-A4-70			2
	24,3 82 23 30		Hexagon nut M5-A4-70			2
	24,4 306 77 27		Clamp			2
	24,5 319 66 02		Entrance flange			1
24	394 77 36		Motor cable entr.uni			1
	24,1 81 73 63		Slotted head screw M5X30-A4-70			2
	24,3 82 23 30		Hexagon nut M5-A4-70			2
	24,4 306 77 27		Clamp			2
	24,5 319 66 02		Entrance flange			1
24	394 77 44		Motor cable entr.uni			1
	24,1 81 73 64		Slotted head screw M5X35-A4-70			2
	24,3 82 23 30		Hexagon nut M5-A4-70			2
	24,4 306 77 25		Clamp			2
	24,5 319 66 02		Entrance flange			1
24	394 77 44		Motor cable entr.uni			2
	24,1 81 73 64		Slotted head screw M5X35-A4-70			2
	24,3 82 23 30		Hexagon nut M5-A4-70			2
	24,4 306 77 25		Clamp			2
	24,5 319 66 02		Entrance flange			1
25	319 22 02		Cover			1

Pos. No	Part. No	Type	Denomination	Qty/Version		
				091	181	280
26	82 00 69		Hex.socket hd screw M12X30-A2-70	4		
26	82 00 69		Hex.socket hd screw M12X30-A2-70	2		
26	81 41 55		Hexagon head screw M12X30-A2-70		2	
26	81 41 55		Hexagon head screw M12X30-A2-70		4	
26	83 03 46		Hex.socket hd screw M12X30-A4-70			4
28	82 41 00		Plain washer (32)-34 MM	4		
28	82 41 00		Plain washer (32)-34 MM	2	2	
28	82 41 00		Plain washer (32)-34 MM	2	4	
28	82 41 04		Plain washer (40)-42 MM	2		
28	82 40 75		Plain washer (47)-49 MM	2		
28	82 41 04		Plain washer (40)-42 MM	4	2	
28	82 40 75		Plain washer (47)-49 MM	4		
28	82 41 04		Plain washer (40)-42 MM		4	
28	82 41 04		Plain washer (40)-42 MM		8	
28	82 40 75		Plain washer (47)-49 MM		2	
28	82 40 75		Plain washer (47)-49 MM		4	
28	82 40 84		Plain washer (12)-14 MM		2	
28	82 40 84		Plain washer (12)-14 MM		4	
28	82 42 89		Plain washer 34.5X60X2-A4-70			2
28	82 42 93		Plain washer 42.5X60X2-A4-70			2
28	82 42 93		Plain washer 42.5X60X2-A4-70			4
28	82 42 89		Plain washer 34.5X60X2-A4-70			4
28	82 42 93		Plain washer 42.5X60X2-A4-70			8
29	84 44 10		Seal sleeve (24)-26 MM	2		
29	84 44 11		Seal sleeve (26)-28 MM	2		
29	84 44 11		Seal sleeve (26)-28 MM	1		
29	84 44 12		Seal sleeve (28)-30 MM	2		
29	84 44 12		Seal sleeve (28)-30 MM	1		
29	84 44 14		Seal sleeve (32)-34 MM	1		
29	84 44 15		Seal sleeve (33)-35 MM	1		
29	84 44 17		Seal sleeve (37)-39 MM	2		
29	84 44 17		Seal sleeve (37)-39 MM	1		
29	84 44 18		Seal sleeve (40)-42 MM	1		
29	84 44 19		Seal sleeve (42)-44 MM	1		
29	84 44 15		Seal sleeve (33)-35 MM	2		
29	84 44 18		Seal sleeve (40)-42 MM	2		
29	84 44 19		Seal sleeve (42)-44 MM	2		
29	84 44 10		Seal sleeve (24)-26 MM	1		
29	84 35 71		Seal sleeve (24)-26 MM		1	
29	84 35 71		Seal sleeve (24)-26 MM		2	
29	84 35 73		Seal sleeve (26)-28 MM		1	
29	84 35 73		Seal sleeve (26)-28 MM		2	
29	84 35 68		Seal sleeve (30)-32 MM		1	
29	84 35 68		Seal sleeve (30)-32 MM		2	

Pos. No	Part. No	Type	Denomination	Qty/Version		
				091	181	280
29	84 35 60		Seal sleeve (32)-34 MM		1	
29	84 35 60		Seal sleeve (32)-34 MM		2	
29	84 35 61		Seal sleeve (33)-35 MM		1	
29	84 35 61		Seal sleeve (33)-35 MM		2	
29	84 35 62		Seal sleeve (35)-37 MM		1	
29	84 35 63		Seal sleeve (37)-39 MM		1	
29	84 35 62		Seal sleeve (35)-37 MM		2	
29	84 35 63		Seal sleeve (37)-39 MM		2	
29	84 35 64		Seal sleeve (40)-42 MM		1	
29	84 35 64		Seal sleeve (40)-42 MM		2	
29	84 35 49		Seal sleeve (45)-47 MM		1	
29	84 35 49		Seal sleeve (45)-47 MM		2	
29	84 35 59		Seal sleeve (12)-14 MM		1	
29	84 35 59		Seal sleeve (12)-14 MM		2	
29	84 35 71		Seal sleeve (24)-26 MM			1
29	84 35 73		Seal sleeve (26)-28 MM			1
29	84 35 60		Seal sleeve (32)-34 MM			1
29	84 35 61		Seal sleeve (33)-35 MM			1
29	84 35 62		Seal sleeve (35)-37 MM			1
29	84 35 63		Seal sleeve (37)-39 MM			1
29	84 35 64		Seal sleeve (40)-42 MM			1
29	84 35 71		Seal sleeve (24)-26 MM			2
29	84 35 73		Seal sleeve (26)-28 MM			2
29	84 35 60		Seal sleeve (32)-34 MM			2
29	84 35 61		Seal sleeve (33)-35 MM			2
29	84 35 62		Seal sleeve (35)-37 MM			2
29	84 35 63		Seal sleeve (37)-39 MM			2
29	84 35 64		Seal sleeve (40)-42 MM			2
31	82 80 90		O-ring 59.5X3 FPM			1
31	82 81 11		O-ring 64.2X5.7 FPM			1
32	319 03 05	(Ex)	Entrance cover	Cable entry auxiliary cable	1	
32	319 03 06	(Ex)	Entrance cover	Cable entry auxiliary cable	1	
32	319 03 07	(Ex)	Entrance cover	Cable entry auxiliary cable	1	
32	319 03 08	(Ex)	Entrance cover	Cable entry auxiliary cable	1	
32	319 03 09		Entrance cover	Cable entry auxiliary cable		1
32	319 03 00		Entrance cover	Cable entry auxiliary cable		1
32	319 03 10		Entrance cover	Cable entry auxiliary cable		1
32	319 03 11		Entrance cover	Cable entry auxiliary cable		1
32	491 59 00		Entrance cover	Cable entry auxiliary cable		1
32	491 59 01		Entrance cover			1
32	517 47 00	(Ex)	Entrance flange			1
32	517 47 00	(Ex)	Entrance flange			2
33	82 75 00		O-ring 269.3X5.7 NBR		1	1
33	82 81 14		O-ring 269.3X5.7 FPM			1

Pos. No	Part. No	Type	Denomination	Qty/Version		
				091	181	280
34	80 30 46	(Ex)	Parallel pin CP-H8-8X16-2346	1	1	1
35	82 01 05		Hex.socket hd screw M16X40-A2-70	4	4	
35	83 03 70		Hex.socket hd screw M16X40-A4-70			4
37	391 30 02		Bearing housing UPPER FM/EN APPR.	1		
37	391 30 00		Bearing housing UPPER		1	
37	491 61 00		Bearing housing			1
38	82 75 06		O-ring 359.3X5.7 NBR	1	1	
38	82 81 53		O-ring 359.3X5.7 FPM			1
39	80 30 46		Parallel pin CP-H8-8X16-2346	1	1	1
40	82 01 05		Hex.socket hd screw M16X40-A2-70	6	6	
40	83 03 70		Hex.socket hd screw M16X40-A4-70			6
43	426 82 00		Con.term.board unit	1	1	1
44	82 74 81		O-ring 139.5X3 NBR	1	1	
44	82 72 91		O-ring 139.5X3 FPM			1
45	81 41 06		Hexagon head screw M8X25-A2-70	4	4	4
46	82 35 16		Plain washer 8-A2-170	4	4	4
48	83 42 21		End sleeve 35 MM2; L=18 MM		4	3
48	83 42 21		End sleeve 35 MM2; L=18 MM		8	6
48	83 42 21		End sleeve 35 MM2; L=18 MM		3	
48	83 42 21		End sleeve 35 MM2; L=18 MM		6	
49	83 42 34		End sleeve 25 MM2; L=15 MM	6	6	6
49	83 42 36		End sleeve 0.75 MM2; L=6 MM	2	2	2
49	83 42 39		End sleeve 16 MM2; L=12 MM	6	6	
49	83 42 34		End sleeve 25 MM2; L=15 MM	6		6
49	83 42 39		End sleeve 16 MM2; L=12 MM	6		
49	83 42 39		End sleeve 16 MM2; L=12 MM	9	9	
49	83 42 35		End sleeve 10 MM2; L=12 MM	6		
49	83 42 30		End sleeve 6 MM2; L=10 MM	6	3	
49	83 42 30		End sleeve 6 MM2; L=10 MM	6	6	
49	83 42 39		End sleeve 16 MM2; L=12 MM	2		
49	83 42 30		End sleeve 6 MM2; L=10 MM	3		
49	83 42 34		End sleeve 25 MM2; L=15 MM	3		
49	83 42 39		End sleeve 16 MM2; L=12 MM	1		
49	83 42 30		End sleeve 6 MM2; L=10 MM	4		
49	83 42 34		End sleeve 25 MM2; L=15 MM	2		
49	83 42 30		End sleeve 6 MM2; L=10 MM	2		
49	83 42 34		End sleeve 25 MM2; L=15 MM	1		
49	83 42 35		End sleeve 10 MM2; L=12 MM		6	
49	83 42 39		End sleeve 16 MM2; L=12 MM		6	6
49	83 42 39		End sleeve 16 MM2; L=12 MM		6	
49	83 42 36		End sleeve 0.75 MM2; L=6 MM		6	
49	83 42 39		End sleeve 16 MM2; L=12 MM		12	
49	83 42 38	End sleeve 1.5 MM2; L=7 MM		2	2	

Pos. No	Part. No	Type	Denomination	Qty/Version		
				091	181	280
49	83 42 34		End sleeve 25 MM2; L=15 MM		3	
49	83 42 39		End sleeve 16 MM2; L=12 MM		1	
49	83 42 39		End sleeve 16 MM2; L=12 MM		2	
49	83 42 30		End sleeve 6 MM2; L=10 MM		2	
49	83 42 34		End sleeve 25 MM2; L=15 MM		1	
49	83 42 35		End sleeve 10 MM2; L=12 MM		1	
49	83 42 30		End sleeve 6 MM2; L=10 MM		4	
49	83 42 34		End sleeve 25 MM2; L=15 MM		2	
49	83 42 35		End sleeve 10 MM2; L=12 MM		3	
49	83 42 36		End sleeve 0.75 MM2; L=6 MM			2
49	83 42 39		End sleeve 16 MM2; L=12 MM			6
49	83 42 30		End sleeve 6 MM2; L=10 MM			2
49	83 42 34		End sleeve 25 MM2; L=15 MM			1
49	83 42 35		End sleeve 10 MM2; L=12 MM			1
49	83 42 30		End sleeve 6 MM2; L=10 MM			4
49	83 42 34		End sleeve 25 MM2; L=15 MM			2
49	83 42 35		End sleeve 10 MM2; L=12 MM			3
51	83 42 65		Terminal block	2		
51	83 42 65		Terminal block		1	1
51	83 42 65		Terminal block		2	2
51	83 42 65		Terminal block		4	4
51	83 42 65		Terminal block		1	2
51	83 42 65		Terminal block		3	2
52	94 05 15		Insulating hose D=16 MM	1	1	1
52	94 05 15		Insulating hose D=16 MM	*	*	
52	94 13 64		Insulating hose DIAM.25; CLASS H180/4KV	*	*	*
53	81 41 04		Hexagon head screw M8X20-A2-70	4	4	2
56	303 09 00		Earthing plate FM/PTB	4	4	4
57	441 41 00		Protective disc	1	1	1
58	391 32 00		Cover	1	1	1
59	82 59 21		Retaining ring SGA 72	2	1	1
60	393 03 00		Plain washer	1	1	1
61	84 53 75		Roller bearing ECP(75X160X37)	1	1	1
65	391 33 02		Bearing cover	1	1	1
66	391 31 00		Ring	1	1	1
68	82 00 52		Hex.socket hd screw M10X30-A2-70	4	4	4
69	531 43 01	(Ex)	Stator housing EN- & FM-APPROVED	1		
69	531 43 00		Stator housing		1	
69	491 60 02		Stator housing			1
70	82 01 05		Hex.socket hd screw M16X40-A2-70	4	4	
70	83 03 70		Hex.socket hd screw M16X40-A4-70			4
73	542 54 01	(Ex)	Shaft unit	1		
	73,1 527 68 00		Shaft	1		

Pos. No	Part. No	Type	Denomination	Qty/Version		
				091	181	280
73,3	80 30 07		Parallel pin	1		
73	527 72 00	(Ex)	Shaft unit 35-28-4	1		
73,1	527 68 00		Shaft	1		
73,3	80 30 07		Parallel pin	1		
73	527 72 02	(Ex)	Shaft unit 35-24-6 35-24-8	1		
73,1	527 68 00		Shaft	1		
73,3	80 30 07		Parallel pin	1		
73	527 72 01	(Ex)	Shaft unit 35-28-6 35-28-8	1		
73,1	527 68 00		Shaft	1		
73,3	80 30 07		Parallel pin	1		
73	542 54 00		Shaft unit 35-24-4		1	
73,1	319 15 00		Shaft		1	
73,3	80 30 07		Parallel pin			
73	319 14 00		Shaft unit 35-28-4		1	
73,1	319 15 00		Shaft		1	
73,3	80 30 07		Parallel pin			
73	319 14 06		Shaft unit 35-24-6 35-24-8		1	
73,1	319 15 00		Shaft		1	
73,3	80 30 07		Parallel pin			
73	319 14 01		Shaft unit 35-28-6 35-28-8		1	
73,1	319 15 00		Shaft		1	
73,3	80 30 07		Parallel pin			
73	542 54 02		Shaft unit 35-24-4			1
73,1	319 15 02		Shaft			1
73	319 14 04		Shaft unit 35-28-4			1
73,1	319 15 02		Shaft			1
73	319 14 05		Shaft unit 35-28-6			1
73,1	319 15 02		Shaft			1
79	542 59 30		Stator 35-24-4a 3-phase 60Hz 4-poles 380V D P2=45kW/60hp	1	1	
79	542 59 34		Stator 35-24-4a 3-phase 50 Hz 4-poles 380V-400V Y 220V-230V D P2=40kW 3-phase 60 Hz 4-poles 440V-460V Y 260V D P2=45kW/60hp	1	1	1
79	542 59 38		Stator 35-24-4a 3-phase 50 Hz 4-poles 380V D 660V Y P2=40kW 3-phase 60 Hz 4-poles 440V-460V D P2=45kW/60hp	1	1	1
79	542 59 39		Stator 35-24-4a 3-phase 50 Hz 4-poles 400V D 690V Y P2=40kW 3-phase 60 Hz 4-poles 460V D P2=45kW/60hp	1	1	1
79	542 59 44		Stator 35-24-4a 3-phase 50 Hz 4-poles 400V-440V D P2=40kW 3-phase 60 Hz 4-poles 480V D P2=45kW/60hp	1	1	1

Pos. No	Part. No	Type	Denomination	Qty/Version		
				091	181	280
79	542 59 52		Stator 35-24-4a 3-phase 50 Hz 4-poles 500V-550V D P2=40kW 3-phase 60 Hz 4-poles 575V-600V D P2=45kW/60hp	1	1	1
79	319 98 28		Stator 35-28-4a 3-phase 50 Hz 4-poles 190V-200V D P2=54kW 3-phase 60 Hz 4-poles 200V-220V D P2=66kW/88hp	1	1	
79	319 98 30		Stator 35-28-4a 3-phase 60 Hz 4-poles 380V D P2=66kW/88hp	1	1	
79	319 98 34		Stator 35-28-4a 3-phase 50 Hz 4-poles 380V-400V Y 220V-230V D P2=54kW 3-phase 60 Hz 4-poles 440V-460V Y 260V D P2=66kW/88hp	1	1	
79	319 98 35		Stator 35-28-4a 3-phase 50 Hz 4-poles 346V-350V D P2=54kW	1		
79	319 98 38		Stator 35-28-4a 3-phase 50 Hz 4-poles 380V D 660V Y P2=54kW 3-phase 60 Hz 4-poles 440V-460V D P2=66kW/88hp	1	1	
79	319 98 39		Stator 35-28-4a 3-phase 50 Hz 4-poles 400V D 690V Y P2=54kW 3-phase 60 Hz 4-poles 460V D P2=66kW/88hp	1	1	
79	319 98 40		Stator 35-28-4a 3-phase 50 Hz 4-poles 400V D P2=54kW 3-phase 60 Hz 4-poles 400V D P2=66kW/88hp	1		
79	319 98 44		Stator 35-28-4a 3-phase 50 Hz 4-poles 400V-440V D P2=54kW 3-phase 60 Hz 4-poles 480V D P2=66kW/88hp	1	1	
79	319 98 50		Stator 35-28-4a 3-phase 50 Hz 4-poles 500V D P2=54kW 3-phase 60 Hz 4-poles 575V D P2=66kW/88hp	1	1	
79	319 98 52		Stator 35-28-4a 3-phase 50 Hz 4-poles 500V-550V D P2=54kW 3-phase 60 Hz 4-poles 575V-600V D P2=66kW/88hp	1	1	
79	427 39 30		Stator 35-24-6a 3-phase 60 Hz 6-poles 380V D P2=45kW/60hp	1	1	
79	427 39 38		Stator 35-24-6a 3-phase 50 Hz 6-poles 380V-400V D 660V-690V Y P2=34kW 3-phase 60 Hz 6-poles 440V-460V D P2=45kW/60hp	1	1	
79	427 39 44		Stator 35-24-6a 3-phase 50 Hz 6-poles 400V-440V D P2=34kW 3-phase 60 Hz 6-poles 480V D P2=45kW/60hp	1	1	

Pos. No	Part. No	Type	Denomination	Qty/Version		
				091	181	280
79	319 74 28		Stator 35-28-6a 3-phase 50 Hz 6-poles 190V-200V D P2=44kW 3-phase 60 Hz 6-poles 200V-220V D P2=56kW/75hp	1	1	
79	319 74 30		Stator 35-28-6a 3-phase 60Hz 6-poles 380V D P2=56kW/75hp	1	1	
79	319 74 34		Stator 35-28-6a 3-phase 50 Hz 6-poles 380V-400V Y 220V-230V D P2=44kW 3-phase 60 Hz 6-poles 440V-460V Y 260V D P2=56kW/75hp	1	1	
79	319 74 38		Stator 35-28-6a 3-phase 50 Hz 6-poles 380V D 660V Y P2=44kW 3-phase 60 Hz 6-poles 440V-460V D P2=56kW/75hp 3-phase 60 Hz 6-poles 460V D P2=45kW/60hp	1	1	
79	319 74 39		Stator 35-28-6a 3-phase 50 Hz 6-poles 400V D 690V Y P2=44kW	1	1	1
79	319 74 44		Stator 35-28-6a 3-phase 50 Hz 6-poles 400V-440V D P2=44kW 3-phase 60 Hz 6-poles 480V D P2=56kW/75hp	1	1	
79	319 74 52		Stator 35-28-6a 3-phase 50 Hz 6-poles 500V-550V D P2=44kW 3-phase 60 Hz 6-poles 575V-600V D P2=56kW/75hp	1	1	
79	427 40 38		Stator 35-24-8a 3-phase 50 Hz 8-poles 380V-400V D 660V-690V Y P2=27kW 3-phase 60 Hz 8-poles 440V-460V D P2=34kW/45hp	1	1	
79	427 40 44		Stator 35-24-8a 3-phase 50 Hz 8-poles 400V-440V D P2=27kW 3-phase 60 Hz 8-poles 400V D P2=34kW/45hp	1	1	
79	427 40 52		Stator 35-24-8a 3-phase 50 Hz 8-poles 500V-550V D P2=27kW 3-phase 60 Hz 8-poles 575V-600V D P2=34kW/45hp	1	1	
79	428 40 29		Stator 35-28-8a 3-phase 60 Hz 8-poles 380V Y 220V-230V D P2=45kW/60hp	1	1	
79	428 40 38		Stator 35-28-8a 3-phase 50 Hz 8-poles 380V-400V D 660V-690V Y P2=37kW 3-phase 60 Hz 8-poles 440V-460V D P2=45kW/60hp	1	1	
79	428 40 44		Stator 35-28-8a 3-phase 50 Hz 8-poles 400V-440V D P2=37kW 3-phase 60 Hz 8-poles 480V D P2=45kW/60hp	1	1	
79	428 40 52		Stator 35-28-8a 3-phase 50 Hz 8-poles 500V-550V D P2=37kW 3-phase 60 Hz 8-poles 575V-600V D P2=45kW/60hp	1	1	

Pos. No	Part. No	Type	Denomination	Qty/Version		
				091	181	280
79	530 28 44		Stator 35-28-4a 3-phase 50 Hz 4-poles 400V-440V D P2=54kW Thermistor		1	
79	530 27 44		Stator 35-24-6a 3-phase 50 Hz 6-poles 400V-440V D P2=34kW Thermistor		1	
79	530 52 44		Stator 35-28-6a Stator 3-phase 50 Hz 6-poles 400V-440V D P2=44kW Thermistor		1	
79	560 85 44		Stator 35-24-8a 3-phase 50 Hz 8-poles 400V-440V D P2=27kW Thermistor		1	
79	530 26 44		Stator 35-28-8a 3-phase 50 Hz 8-poles 400V-440V D P2=37kW Thermistor		1	
79	319 98 28		Stator 35-28-4a 3-phase 50 Hz 4-poles 190V-200V D P2=54kW			1
79	319 98 34		Stator 35-28-4a 3-phase 60 Hz 4-poles 200V-220V D P2=66kW/88hp 3-phase 50 Hz 4-poles 380V-400V Y 220V-230V D P2=54kW			1
79	319 98 38		Stator 35-28-4a Stator 3-phase 60 Hz 4-poles 440V-460V Y 260V D P2=66kW/ 88hp 3-phase 50 Hz 4-poles 380V D 660V Y P2=54kW			1
79	319 98 39		Stator 35-28-4a 3-phase 60 Hz 4-poles 440V-460V D P2=66kW/88hp 3-phase 50 Hz 4-poles 400V D 690V Y P2=54kW			1
79	319 98 44		Stator 35-28-4a 3-phase 60 Hz 4-poles 460V D P2=66kW/88hp 3-phase 50 Hz 4-poles 400V-440V D P2=54kW			1
79	319 98 50		Stator 35-28-4a 3-phase 60 Hz 4-poles 480V D P2=66kW/88hp 3-phase 50 Hz 4-poles 500V D P2=54kW			1
79	319 98 52		Stator 35-28-4a 3-phase 60 Hz 4-poles 575V D P2=66kW/88hp 3-phase 50 Hz 4-poles 500V-550V D P2=54kW			1
79	319 74 28		Stator 35-28-6a 3-phase 60 Hz 4-poles 575V-600V D P2=66kW/88hp 3-phase 50 Hz 6-poles 190V-200V D P2=44kW			1
79	319 74 34		Stator 35-28-6a 3-phase 60 Hz 6-poles 200V-220V D P2=56kW/75hp 3-phase 50 Hz 6-poles 380V-400V Y 220V-230V D P2=44kW 3-phase 60 Hz 6-poles 440V-460V Y 260V D P2=56kW/75hp			1

Pos. No	Part. No	Type	Denomination	Qty/Version		
				091	181	280
79	319 74 38		Stator 35-28-6a 3-phase 50 Hz 6-poles 380V D 660V Y P2=44kW 3-phase 60 Hz 6-poles 440V-460V D P2=56kW/75hp 3-phase 60 Hz 6-poles 460V D P2=45kW/60hp			1
79	319 74 44		Stator 35-28-6a 3-phase 50 Hz 6-poles 400V-440V D P2=44kW 3-phase 60 Hz 6-poles 480V D P2=56kW/75hp			1
79	319 74 52		Stator 35-28-6a 3-phase 50 Hz 6-poles 500V-550V D P2=44kW 3-phase 60 Hz 6-poles 575V-600V D P2=56kW/75hp			1
79	530 28 44		Stator 35-28-4a 3-phase 50 Hz 4-poles 400V-440V D P2=54kW Thermistor			1
80	80 23 58		Parallel pin 8X50	1	1	
80	80 23 58		Parallel pin 8X50			1
82	319 12 01		Outer casing PAINTED	1		
82	319 12 01		Outer casing PAINTED		1	
82	517 19 00		Outer casing compl.			1
83	82 75 10		O-ring 439.3X5.7 NBR	1		
83	82 75 10		O-ring 439.3X5.7 NBR		1	
83	82 81 50		O-ring 439.3X5.7 FPM			1
84	82 78 88		O-ring 460X8-1 NBR	1		
84	82 78 88		O-ring 460X8-1 NBR		1	
84	82 71 65		O-ring 460X8 FPM			1
86	283 13 01		Slotted head screw	2		
86	283 13 01		Slotted head screw		2	
86	83 07 38		Plug DN15;SQUARE FLATE 1/2"			3
87	82 73 91		O-ring 22.2X3 NBR	2		
87	82 73 91		O-ring 22.2X3 NBR		2	
89	279 76 01		Pipe	1		
89	279 76 01		Pipe		1	
89	279 76 11		Pipe			1
92	374 81 03		Plate	1		
92	374 81 03		Plate		1	
92	374 81 13		Plate			1
93	81 73 42		Slotted head screw M4X12-A4-70	2		
93	81 73 42		Slotted head screw M4X12-A4-70		2	2
101	504 78 11		Cable unit (FLS)	1	1	1
102	504 78 04		Cable unit (FLS,CLS30)		1	1
102	543 83 00		Cable unit (FLS,CLS30)		1	1
103	518 89 02		Leakage detect.unit (FLS)	1		
103	518 89 02		Leakage detect.unit (FLS)	1	1	1
104	505 12 00		Leakage detect.unit (CLS30)		1	1

Pos. No	Part. No	Type	Denomination	Qty/Version		
				091	181	280
105	503 45 02	(Ex)	Bearing housing LOWER	1		
105	503 45 00		Bearing housing LOWER		1	1
105	503 45 01		Bearing housing LOWER		1	1
			Leakage detector in the stator house :FLS			
			Leakage detector in the stator house :FLS Water in oil supervision : CLS			
106	84 25 72		Seal ring V-90S	1		
106	84 25 73		Seal ring V-100S		1	1
107	374 56 00		Retaining ring	2	1	1
108	82 44 26		Supporting washer 90X110X3.5	2	2	2
109	83 37 03		Ball bearing 3318 C3 GLAPP(90X190X73)	1	1	1
110	526 34 00	(Ex)	Bearing cover	1		
110	503 34 00		Bearing cover		1	1
111	82 75 02		O-ring 289.3X5.7 NBR	1	1	
111	82 81 51		O-ring 289.3X5.7 FPM			1
112	81 41 55		Hexagon head screw M12X30-A2-70	4	4	4
114	617 99 02		Mechanical seal	1	1	1
117	374 57 00		Washer	1	1	1
118	319 19 00		End washer	1	1	1
119	81 73 86		Slotted head screw M8X12-A4-70	4	4	4
120	428 22 17		Inspection screw BRASS	2	1	
120	319 23 03		Inspection screw			1
120	428 22 05		Inspection screw A4			1
122	82 73 90		O-ring 19.2X3 NBR	2	2	
122	82 72 95		O-ring 19.2X3 FPM			3
126	411 16 01	(Ex)	Cover EN/FM/PTB	1		
126	411 16 02		Cover		1	
126	597 35 00		Cover			1
127	82 74 07		O-ring 74.2X5.7 NBR	1	1	
127	82 80 84		O-ring 74.2X5.7 FPM			1
128	82 00 52		Hex.socket hd screw M10X30-A2-70	4	4	
128	83 04 62		Hex.socket hd screw M10X30-A4-80			4
129	620 78 00		Oil housing	1	1	
129	319 21 81		Oil housing			1
130	82 75 12		O-ring 479.3X5.7 NBR	2	2	
130	82 81 52		O-ring 479.3X5.7 FPM			2
132	646 59 00		Gasket compl.	1		
132	646 59 00		Gasket compl.		1	
132	646 59 03		Gasket compl.		1	1
132	646 59 01		Gasket compl.			1
132	646 59 02		Gasket compl.			1
133	81 41 34		Hexagon head screw M10X40-A2-70	5	5	
133	83 03 26		Hex.socket hd screw M10X40-A4-70			5
134	319 20 00		Washer	1	1	

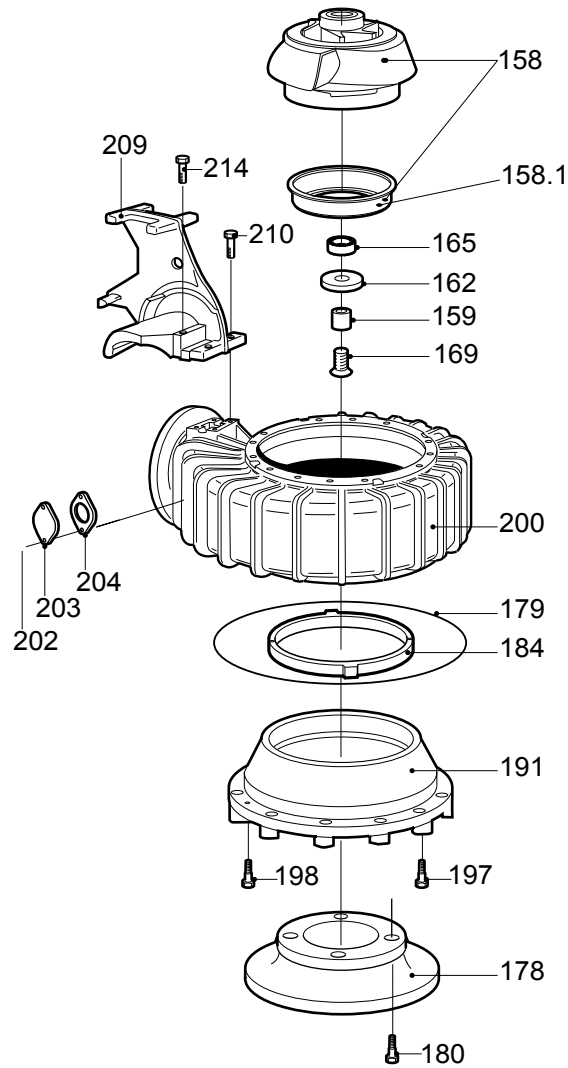
Pos. No	Part. No	Type	Denomination	Qty/Version		
				091	181	280
134	319 20 00		Washer			1
135	306 73 00		Screw with barrel	9	9	
135	306 73 01		Screw with barrel			9
136	302 21 00		Compression spring	9	9	9
138	504 51 00		Wear ring			1
139	82 81 60		O-ring 99.5X3 FPM			1
141	726 18 00		Mechanical seal WCCR/WCCR	1	1	
141	479 95 00		Mechanical seal RSIC/RSIC-TYPE S			1
141	726 18 01		Mechanical seal WCCR/WCCR			1
145	82 01 11		Hex.socket hd screw M16X70-A2-70	8	8	
145	83 03 76		Hex.socket hd screw M16X70-A4-70			8
148	80 46 35		Parallel key 20H9X12H11X70	1	1	
148	80 78 82		Parallel key 20H9X12H11X70			1
149	609 14 00		Washer	3	3	
149	609 14 01		Washer	1	1	
149	609 14 02		Washer	4	4	
150	434 49 03		Hub	1	1	
150	491 96 00		Hub			1
912	82 73 90		O-ring 19.2X3 NBR	4	4	
912	82 72 95		O-ring 19.2X3 FPM			4

4 Hydraulic Unit

4.1 C_LT

With bell mouth, curve: 620, 801 – 809

CP 3300 LT

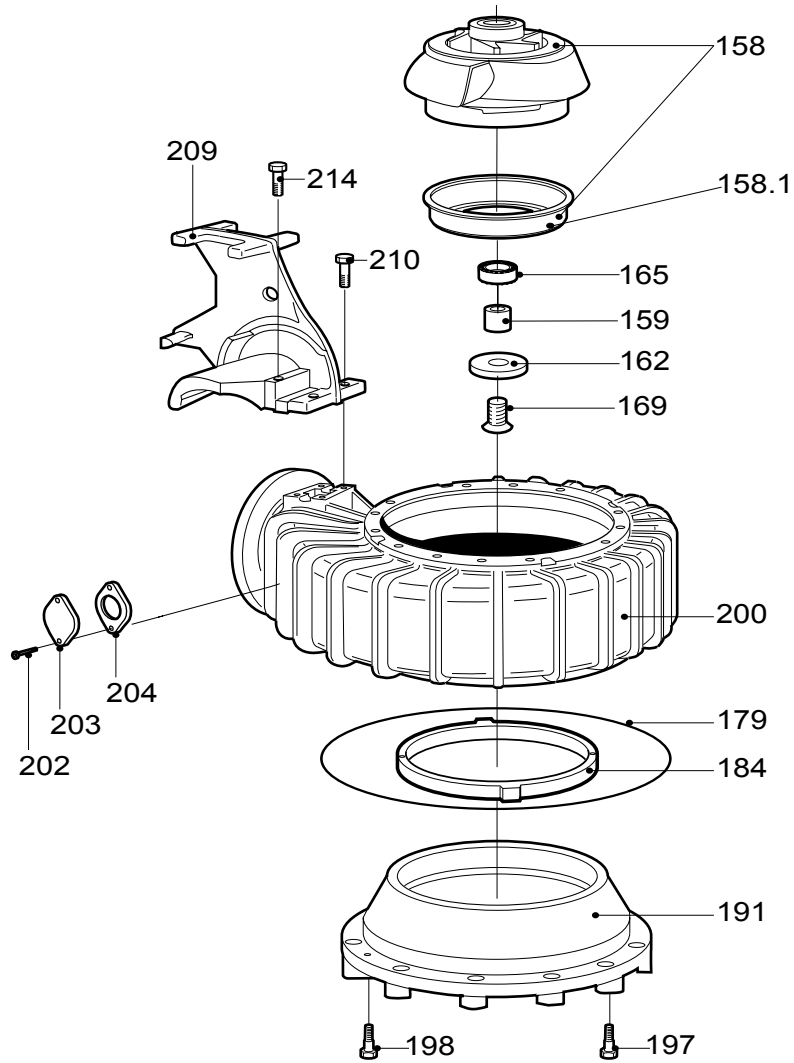


31554

4.2 C_LT

Without bell mouth, curve: 620, 801 – 809

CP 3300 LT

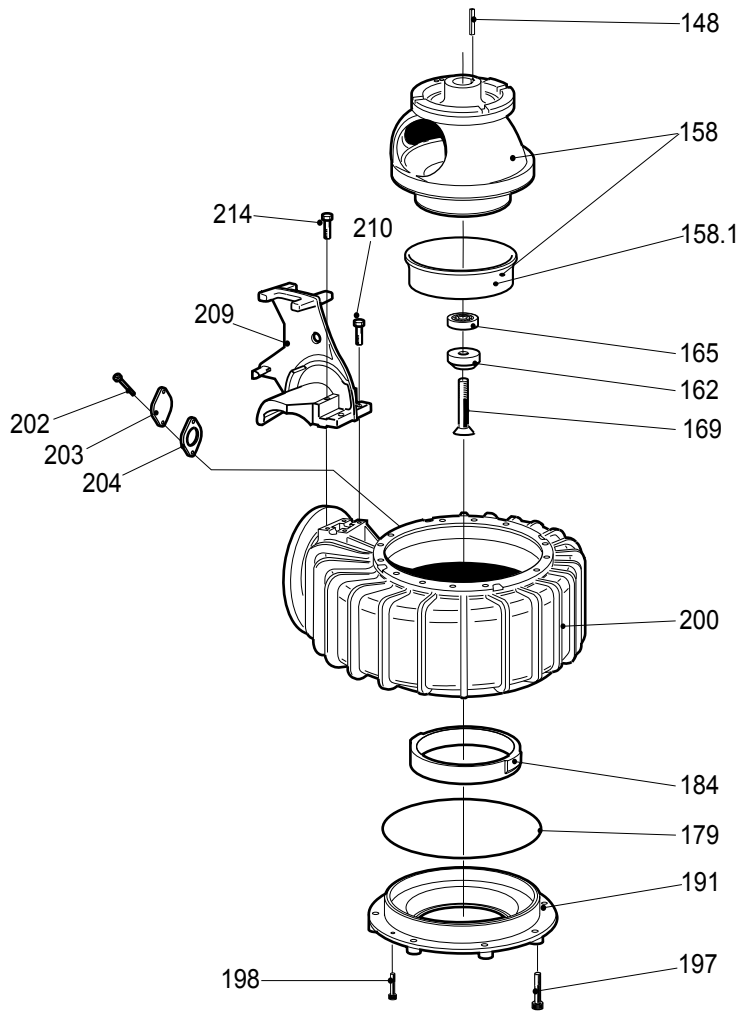


31553

4.3 C_MT

Curve: 632, 636, 638, 640 – 642, 644, 646, 648

CP 3300 MT

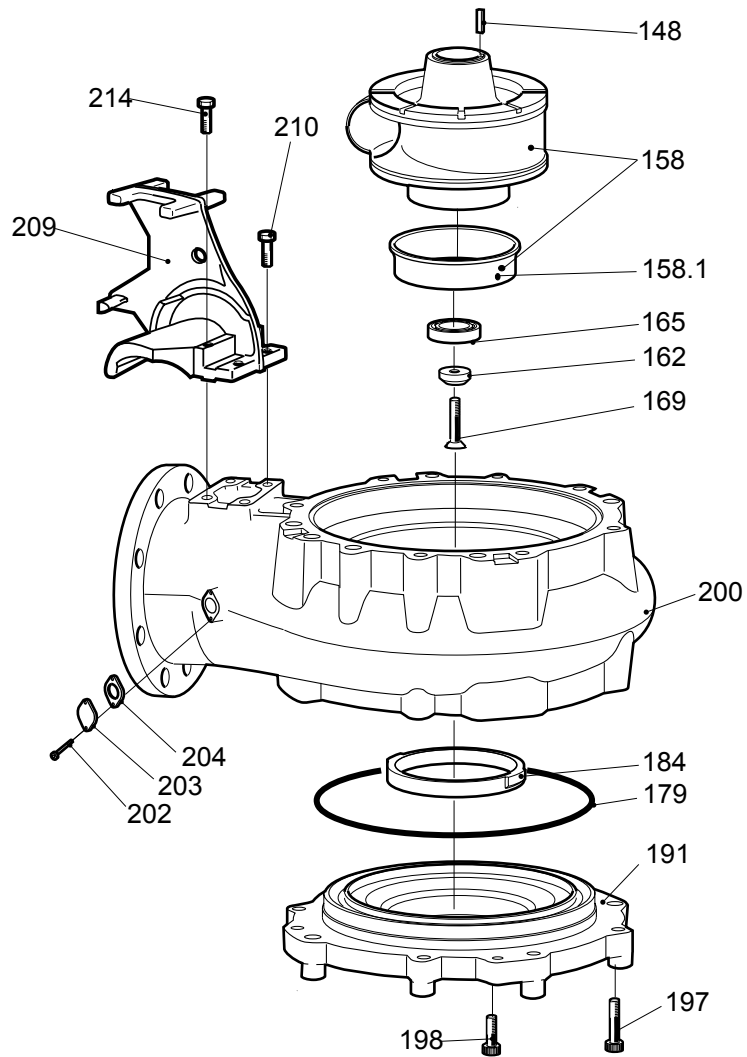


31555

4.4 C_HT

Single vane, curve: 452, 454

CP 3300 HT

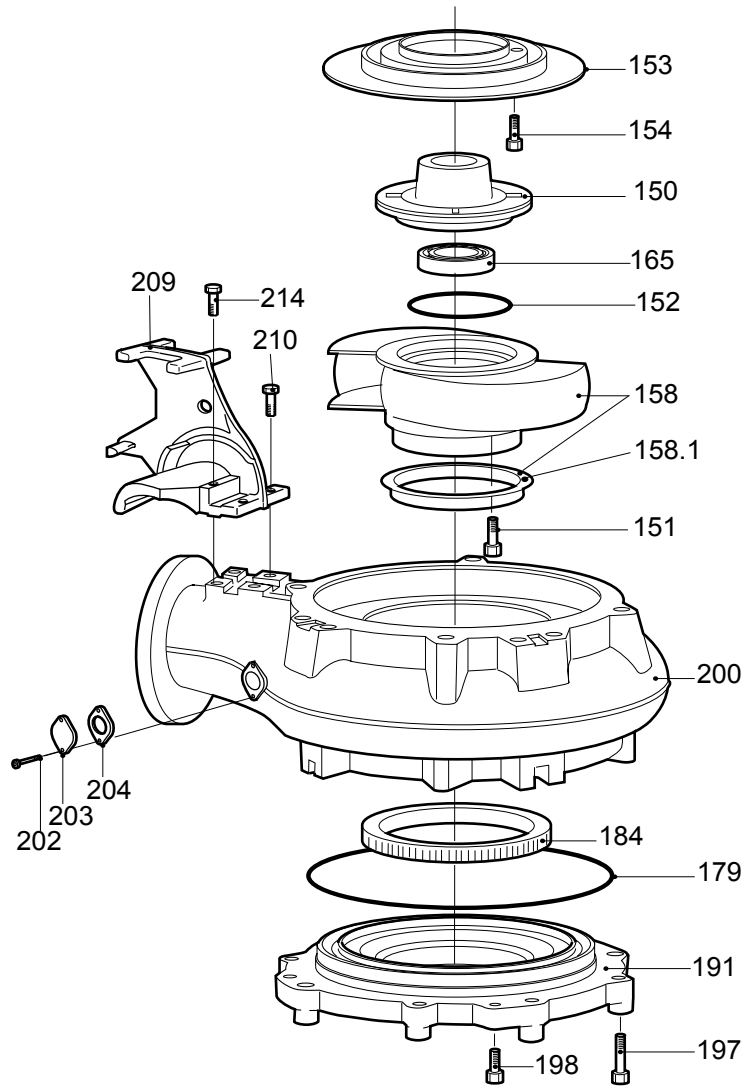


31556

4.5 C_HT

Two-vane, curve: 460 – 468

CP 3300 HT 2-VANE

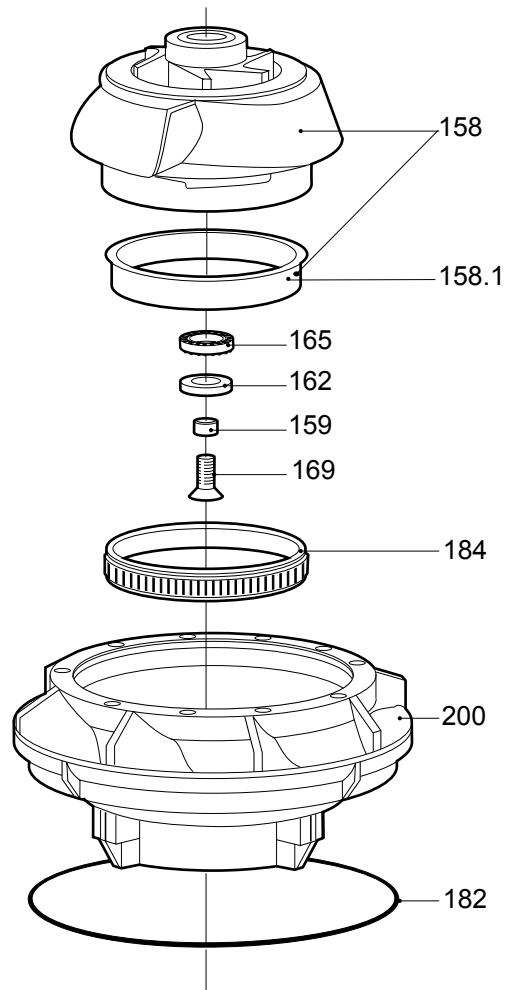


31557

4.6 LL LT

Curve: 801 – 809

LL 3300 LT

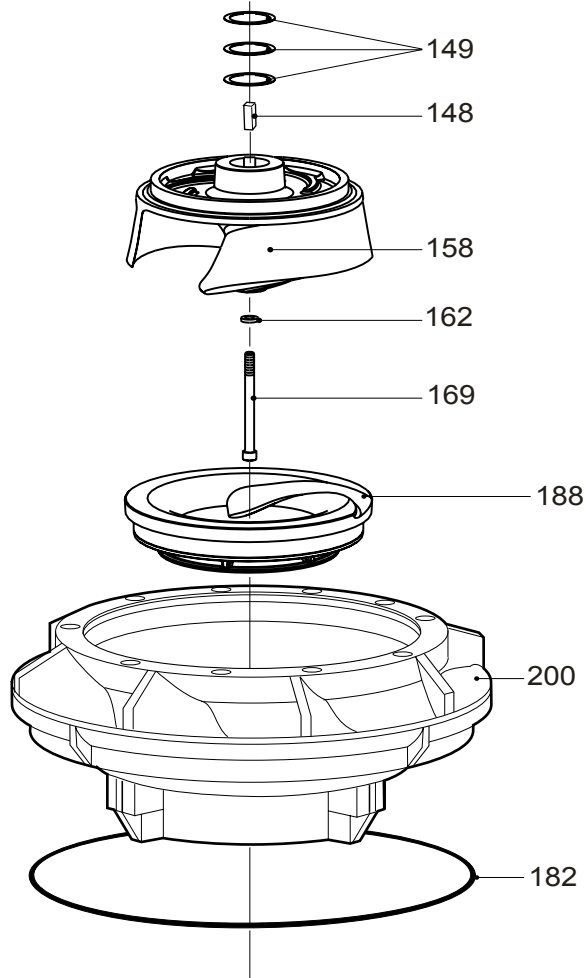


30367

4.7 NL LT

Curve: 621 – 624, 821 – 824

NL 3300 LT



30494

4.8 3300.091/181/280

Pos. No	Part. No	Type	Denomination	Qty/Version		
				091	181	280
151	82 00 71		Hex.socket hd screw M12X40-A2-70	2	2	
151	83 03 48		Hex.socket hd screw M12X40-A4-70			2
152	82 74 12		O-ring 99.1X5.7 NBR	1	1	
152	82 81 05		O-ring 99.1X5.7 FPM			1
153	434 48 00		Insert ring HT Drilled acc. to: EN 1092-2 tab. 9 ANSI B16.1-89; tab.5 Prepared for Flush valve HT	1	1	
153	492 01 00		Insert ring HT C DN 150 Drilled acc. to: EN 1092-2 tab. 9 ANSI B16.1-89; tab.5			1
154	82 00 49		Hex.socket hd screw M10X20-A2-70	2	2	
154	83 03 21		Hex.socket hd screw M10X20-A4-70			2
158	601 65 68		Impeller 801 LT 50Hz	1	1	
158,1	345 25 21		Wear ring	1	1	
158	601 65 70		Impeller 802 LT 50Hz	1	1	
158,1	345 25 21		Wear ring	1	1	
158	601 65 73		Impeller 803 LT 50Hz 803 LT 60Hz	1	1	
158,1	345 25 21		Wear ring	1	1	
158	601 65 75		Impeller 804 LT 50Hz 804 LT 60Hz	1	1	
158,1	345 25 21		Wear ring	1	1	
158	601 65 78		Impeller 805 LT 50Hz 805 LT 60Hz	1	1	
158,1	345 25 21		Wear ring	1	1	
158	601 65 80		Impeller 806 LT 50Hz 806 LT 60Hz	1	1	
158,1	345 25 21		Wear ring	1	1	
158	601 65 83		Impeller 807 LT 50Hz 807 LT 60Hz	1	1	
158,1	345 25 21		Wear ring	1	1	
158	601 65 85		Impeller 808 LT 50Hz 808 LT 60Hz	1	1	
158,1	345 25 21		Wear ring	1	1	
158	601 65 88		Impeller 809 LT 50Hz 809 LT 60Hz	1	1	
158,1	345 25 21		Wear ring	1	1	
158	531 57 07		Impeller unit 620 LT 50Hz	1	1	
158,1	345 25 09		Wear ring	1	1	
158	606 22 02		Impeller 621 821 LT 50Hz 621 821 LT 60Hz	1	1	
158	606 22 19		Impeller 622 822 LT 50Hz 622 822 LT 60Hz	1	1	
158	606 22 36		Impeller 623 823 LT 50Hz 623 823 LT 60Hz	1	1	

Pos. No	Part. No	Type	Denomination	Qty/Version		
				091	181	280
158	606 22 62		Impeller 624 824 LT 50Hz 624 824 LT 60Hz	1	1	
158	606 22 71		Impeller 625 LT 60Hz	1	1	
158	319 40 00		Impeller unit 632 MT 50Hz	1	1	
158,1	345 25 00		Wear ring	1	1	
158	408 55 00		Impeller unit 636 MT 50Hz 636 MT 60Hz	1	1	
158,1	345 25 00		Wear ring	1	1	
158	408 56 00		Impeller unit 638 MT 50Hz 638 MT 60Hz	1	1	
158,1	345 25 00		Wear ring	1	1	
158	408 57 00		Impeller unit 640 MT 50Hz 640 MT 60Hz	1	1	
158,1	345 25 00		Wear ring	1	1	
158	434 62 00		Impeller 641 MT 50Hz	1	1	
158,1	345 25 03		Wear ring	1	1	
158	434 62 01		Impeller unit 642 MT 50Hz 642 MT 60Hz	1	1	
158,1	345 25 03		Wear ring	1	1	
158	434 62 02		Impeller unit 644 MT 50Hz 644 MT 60Hz	1	1	
158,1	345 25 03		Wear ring	1	1	
158	434 62 03		Impeller unit 646 MT 50Hz 646 MT 60Hz	1	1	
158,1	345 25 03		Wear ring	1	1	
158	434 62 04		Impeller unit 648 MT 50Hz 648 MT 60Hz	1	1	
158,1	345 25 03		Wear ring	1	1	
158	393 81 00		Impeller unit 452 HT 50Hz	1	1	
158,1	345 25 02		Wear ring	1	1	
158	393 84 00		Impeller unit 454 HT 50Hz 454 HT 60Hz	1	1	
158,1	345 25 02		Wear ring	1	1	
158	481 72 01		Impeller unit 460 HT 50Hz	1	1	
158,1	345 25 02		Wear ring	1	1	
158	481 72 04		Impeller unit 461 HT 50Hz 461 HT 60Hz	1	1	
158,1	345 25 02		Wear ring	1	1	
158	481 72 07		Impeller unit 462 HT 50Hz 462 HT 60Hz	1	1	
158,1	345 25 02		Wear ring	1	1	
158	481 72 10		Impeller unit 463 HT 50Hz 463 HT 60Hz	1	1	
158,1	345 25 02		Wear ring	1	1	

Pos. No	Part. No	Type	Denomination	Qty/Version		
				091	181	280
158	481 72 13		Impeller unit 464 HT 50Hz 464 HT 60Hz	1	1	
158,1	345 25 02		Wear ring	1	1	
158	481 72 16		Impeller unit 465 HT 50Hz 465 HT 60Hz	1	1	
158,1	345 25 02		Wear ring	1	1	
158	481 72 19		Impeller unit 466 HT 50Hz 466 HT 60Hz	1	1	
158,1	345 25 02		Wear ring	1	1	
158	481 72 22		Impeller unit 467 HT 50Hz 467 HT 60Hz	1	1	
158,1	345 25 02		Wear ring	1	1	
158	481 72 25		Impeller unit 468 HT 50Hz 468 HT 60Hz	1	1	
158,1	345 25 02		Wear ring	1	1	
158	434 62 80		Impeller unit	1		
158	434 62 81		Impeller unit 642 MT 50Hz 642 MT 60Hz	1		
158	434 62 82		Impeller unit 644 MT 50Hz 644 MT 60Hz	1		
158	434 62 83		Impeller unit 646 MT 50Hz 646 MT 60Hz	1		
158	434 62 84		Impeller unit 648 MT 50Hz 648 MT 60Hz	1		
158	434 62 90		Impeller unit	1		
158	434 62 91		Impeller unit	1		
158	479 99 01		Impeller unit	1		
158	479 99 04		Impeller unit 460 HT 50Hz 461 HT 50Hz 461 HT 60Hz	1		
158	479 99 07		Impeller unit 462 HT 50Hz 462 HT 60Hz	1		
158	479 99 10		Impeller unit 463 HT 50Hz 463 HT 60Hz	1		
158	479 99 13		Impeller unit 464 HT 50Hz 464 HT 60Hz	1		
158	479 99 16		Impeller unit 465 HT 50Hz 465 HT 60Hz	1		
158	479 99 19		Impeller unit 466 HT 50Hz 466 HT 60Hz	1		
158	479 99 22		Impeller unit 467 HT 50Hz 467 HT 60Hz	1		
158	479 99 25		Impeller unit 468 HT 50Hz 468 HT 60Hz	1		
158,1	345 25 12		Wear ring	1		
158,1	345 25 13		Wear ring	1		

Pos. No	Part. No	Type	Denomination	Qty/Version		
				091	181	280
158	434 62 80		Impeller unit			1
158,1	345 25 13		Wear ring			1
158	434 62 81		Impeller unit			1
158,1	345 25 13		Wear ring			1
158	434 62 82		Impeller unit			1
158,1	345 25 13		Wear ring			1
158	434 62 83		Impeller unit			1
158,1	345 25 13		Wear ring			2
158	434 62 84		Impeller unit			1
158,1	345 25 13		Wear ring			2
158	479 99 01		Impeller unit			1
158,1	345 25 12		Wear ring			1
158	479 99 04		Impeller unit			1
158,1	345 25 12		Wear ring			1
158	479 99 07		Impeller unit			1
158,1	345 25 12		Wear ring			1
158	479 99 10		Impeller unit			1
158,1	345 25 12		Wear ring			1
158	479 99 13		Impeller unit			1
158,1	345 25 12		Wear ring			1
158	479 99 16		Impeller unit			1
158,1	345 25 12		Wear ring			1
158	479 99 19		Impeller unit			1
158,1	345 25 12		Wear ring			1
158	479 99 22		Impeller unit			1
158,1	345 25 12		Wear ring			1
158	479 99 25		Impeller unit			1
158,1	345 25 12		Wear ring			1
159	440 44 00		Sleeve	1	1	
162	341 86 00		Special washer	1	1	
162	82 38 01		Plain washer STAINLESS STEEL A4	1	1	
162	341 86 01		Special washer			1
164	517 94 00		Gasket			1

Pos. No	Part. No	Type	Denomination	Qty/Version		
				091	181	280
165	84 59 12		Locking assembly 55X85	1	1	
165	84 59 12		Locking assembly 55X85			1
169	82 13 95		Hex.socket hd screw 16X70-A4-70	1	1	
169	82 13 97		Hex.socket hd screw 16X100-A4-70	1	1	
169	83 03 87		Hex.socket hd screw M16X180-A4-70	1	1	
169	82 13 95		Hex.socket hd screw 16X70-A4-70		1	1
178	463 59 00		Bell mouth Installation P LT Hydraulic: C	1	1	
178	344 53 01		Bell mouth Installation T Raw water Hydraulic: C	1	1	
179	82 75 12		O-ring 479.3X5.7 NBR MT LT	1	1	
179	82 75 10		O-ring 439.3X5.7 NBR HT	1	1	
179	82 81 52		O-ring 479.3X5.7 FPM MT			1
179	82 81 50		O-ring 439.3X5.7 FPM HT			1
180	84 34 32		Hexagon head screw M20X70-A2-70 Sliding bracket and bell mouth Installation P LT C	4	4	
180	84 34 34		Hexagon head screw M20X80-A2-70 Discharge connection Installation T Raw water C DN 250	8	8	
182	82 83 43		G-ring D=617; T=16	1	1	
184	379 71 01		Wear ring compl. Material: NBR Pressure class: LT	1	1	
184	314 88 14		Ring Material: Bronze Pressure class: LT	1	1	
184	319 32 00		Wear ring compl. Material: NBR Pressure class: MT	1	1	
184	314 88 10		Ring Material: Bronze Pressure class: MT	1	1	
184	379 71 00		Wear ring compl. Material: NBR Pressure class: MT	1	1	
184	314 88 11		Ring Material: Bronze Pressure class: MT	1	1	
184	319 38 00		Wear ring compl. Material: NBR Pressure class: HT	1	1	
184	314 88 05		Ring Material: Bronze Pressure class: LT	1	1	
184	379 71 09		Wear ring compl. MT C DN 250			1
184	319 38 01		Ring compl. HT C DN 150			1
188	609 62 00		Insert ring	1	1	
191	437 82 02		Suction cover LT Pump housing Prepared for Flush valve LT C DN 300	1	1	
191	319 37 00		Suction cover Pump housing Prepared for Flush valve HT C DN 150	1	1	
191	434 50 00		Suction cover Pump housing Prepared for Flush valve HT C DN 150	1	1	
191	319 31 00		Suction cover Impeller MT 50Hz Impeller MT 60Hz	1	1	
191	374 85 00		Suction cover Impeller MT 50Hz Impeller MT 60Hz	1	1	
191	374 85 80		Suction cover Pump housing MT C DN 250			1
191	491 97 00		Suction cover Pump housing HT C DN 150			1
197	82 01 11		Hex.socket hd screw M16X70-A2-70 Pump housing MT Pump housing LT Pump housing HT	8	8	
197	84 34 07		Hexagon head screw M16X60-A2-70 Impeller MT	8	8	

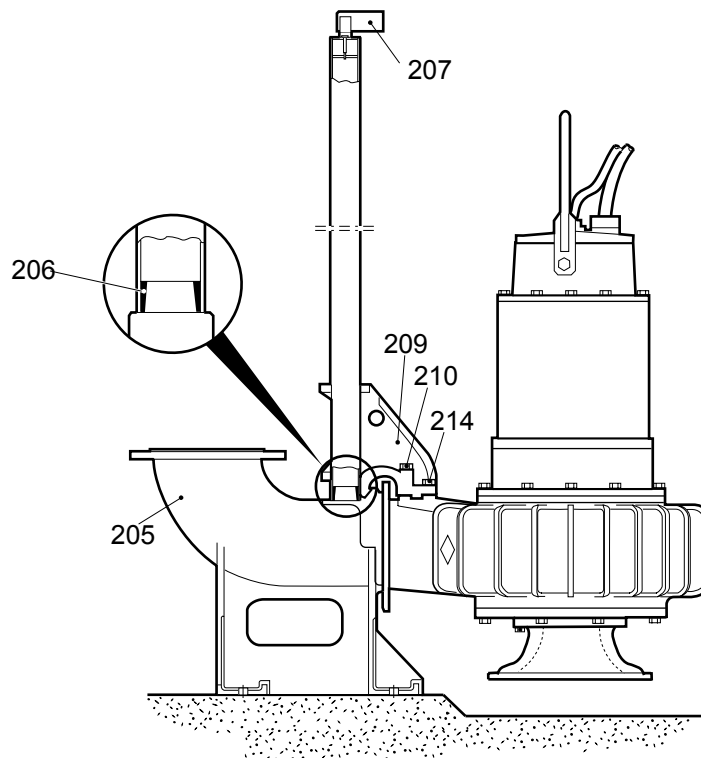
Pos. No	Part. No	Type	Denomination	Qty/Version		
				091	181	280
197	81 49 35		Hexagon head screw M16X60-A4-70 Pump housing MT			8
197	81 49 39		Hexagon head screw M16X80-A4-70 Pump housing HT			8
198	81 41 55		Hexagon head screw M12X30-A2-70	2	2	
198	81 41 55		Hexagon head screw M12X30-A2-70	2	2	
198	81 49 06		Hexagon head screw M12X30-A4-70			2
200	319 34 22		Pump housing LT C DN 300 Undrilled	1	1	
200	319 30 22		Pump housing MT C N DN 250 Undrilled	1	1	
200	319 36 20		Pump housing HT C DN 150 Undrilled	1	1	
200	319 34 00		Pump housing LT C DN 300 Undrilled	1	1	
200	319 34 01		Pump housing LT C DN 300 Drilled acc. to: EN 1092-2 tab. 8	1	1	
200	319 34 05		Pump housing LT C DN 300 Drilled acc. to: ANSI B16.1-89; tab.5	1	1	
200	319 34 07		Pump housing LT C DN 300 Drilled acc. to: EN 1092-2 tab. 9	1	1	
200	319 30 00		Pump housing MT C N DN 250 Undrilled	1	1	
200	319 30 01		Pump housing MT C N DN 250 Drilled acc. to: EN 1092-2 tab. 8	1	1	
200	319 30 05		Pump housing MT C N DN 250 Drilled acc. to: ANSI B16.1-89; tab.5	1	1	
200	319 30 07		Pump housing MT C N DN 250 Drilled acc. to: EN 1092-2 tab. 9	1	1	
200	319 36 00		Pump housing HT C DN 150 Undrilled	1	1	
200	319 36 06		Pump housing HT C DN 150 Drilled acc. to: EN 1092-2 tab. 9 ANSI B16.1-89; tab.5	1	1	
200	547 88 05		Diffuser uncoated LT N Column pipe DN 800 Installation: L	1	1	
200	547 88 00		Diffuser uncoated LT L Column pipe DN 800 Installation: L	1	1	
200	492 05 00		Pump housing MT C DN 250 Undrilled			1
200	492 05 01		Pump housing MT C DN 250 Drilled acc. to: EN 1092-2 tab. 8			1
200	492 05 05		Pump housing MT C DN 250 Drilled acc. to: ANSI B16.1-89; tab.5			1
200	492 06 00		Pump housing HT C DN 150 Undrilled			1
200	492 06 06		Pump housing HT C DN 150 Drilled acc. to: EN 1092-2 tab. 9 ANSI B16.1-89; tab.5			1
202	82 00 51		Hex.socket hd screw M10X25-A2-70	2	2	
203	433 56 00		Cover	1	1	
204	647 99 00		Gasket	1	1	

5 Installation Components

5.1 CP

With Bell Mouth

CP 3300.091/181

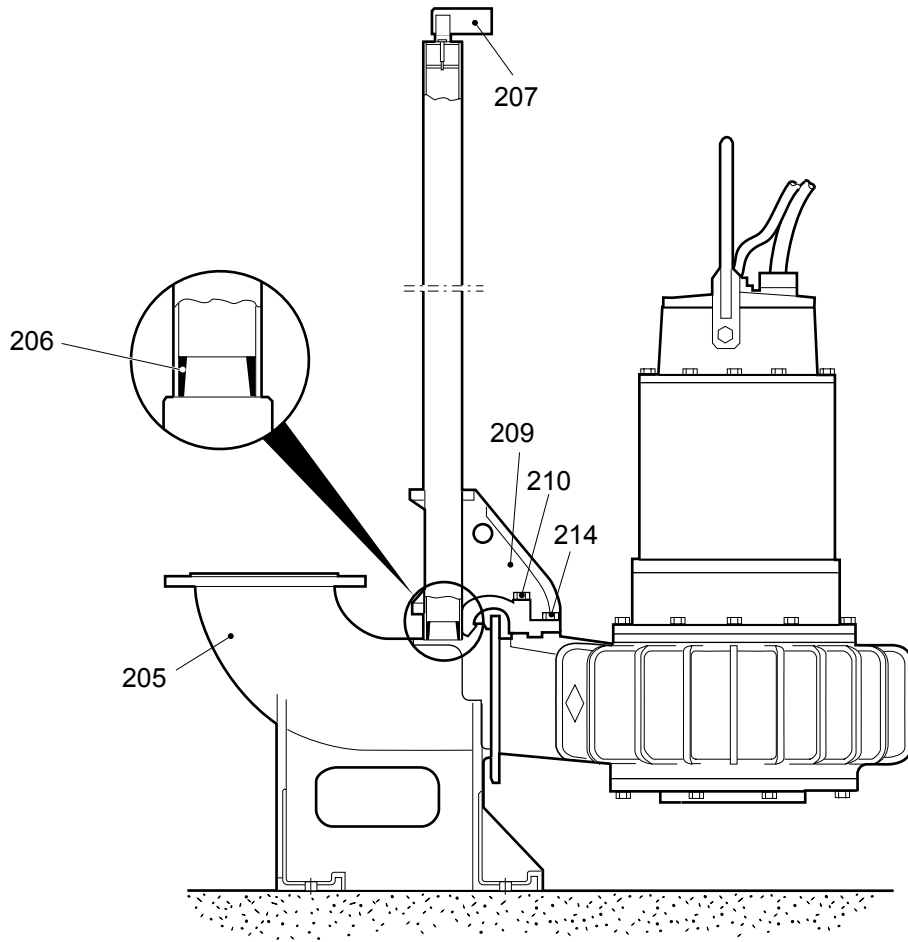


30390

5.2 CP

Without Bell Mouth

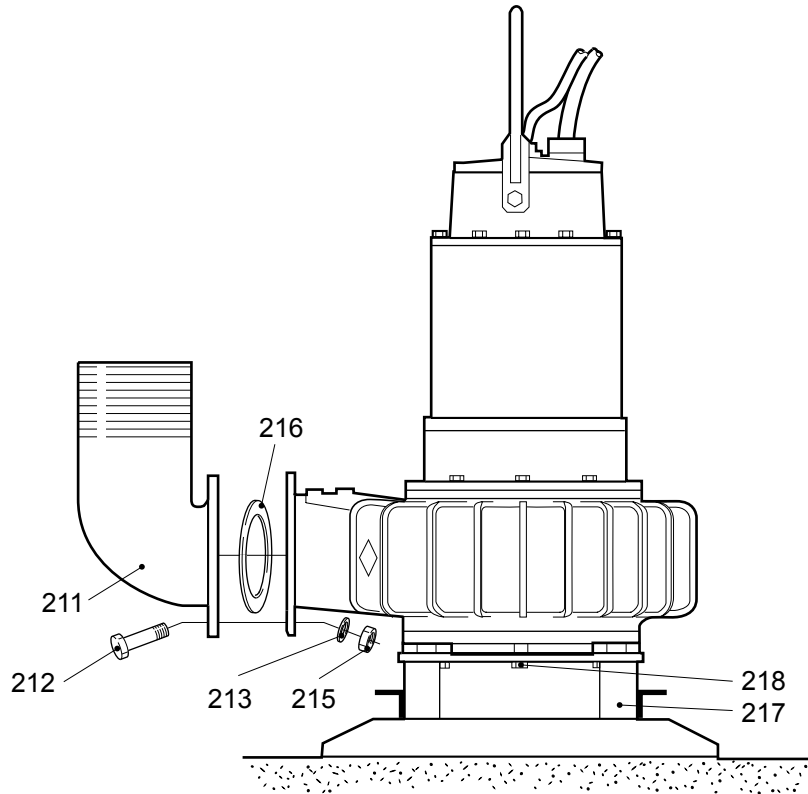
CP 3300



30389

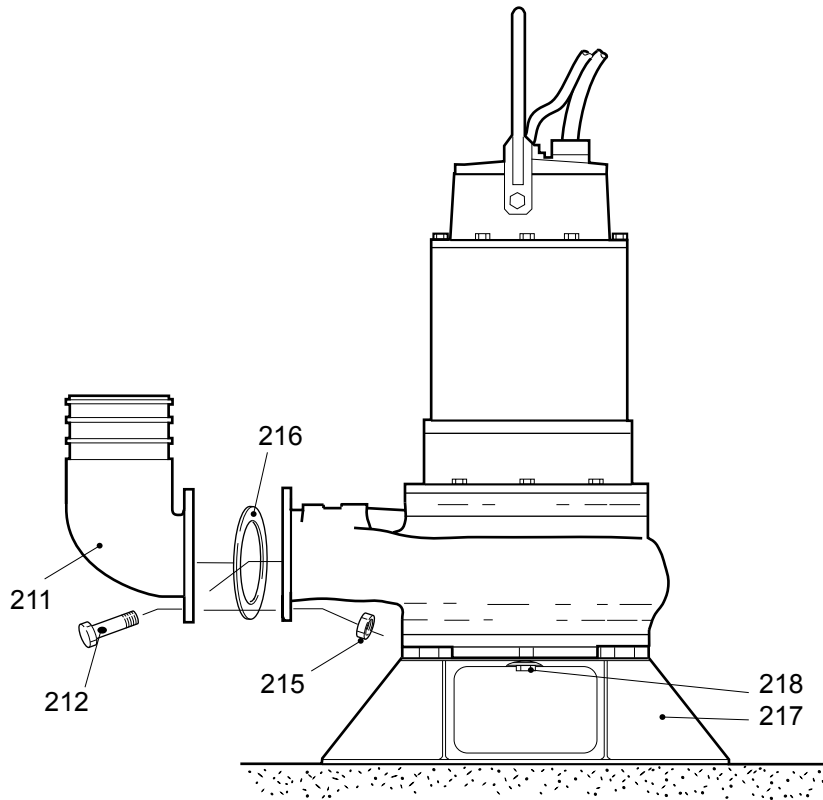
5.3 CS

CS 3300.091/181



30391

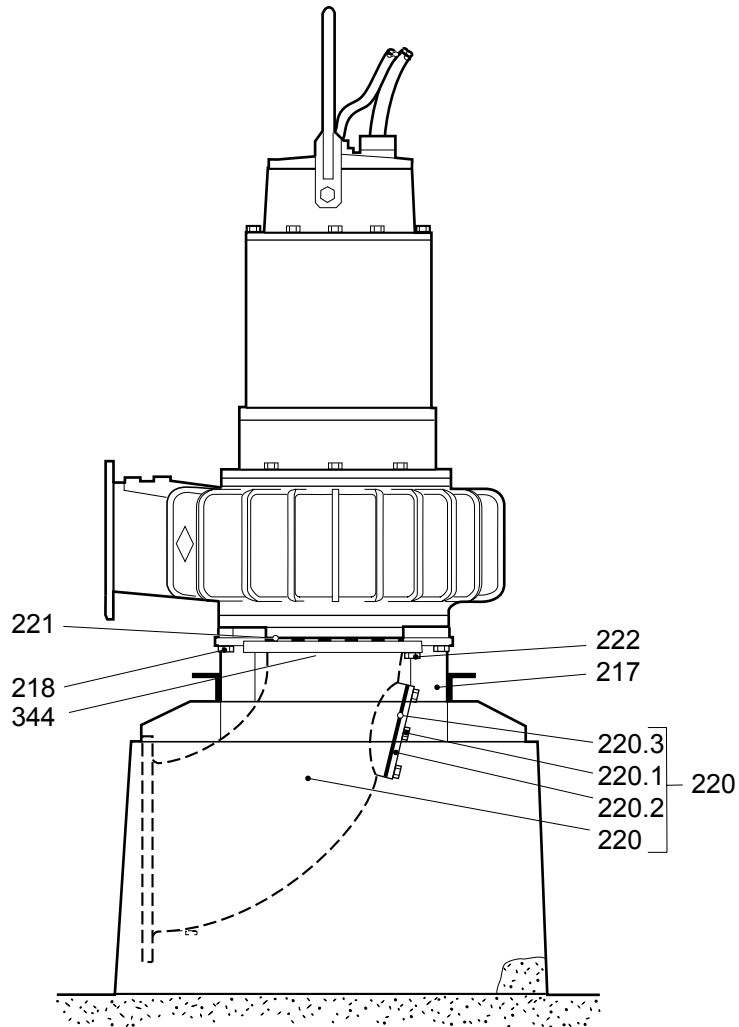
CS 3300.280



30397

5.4 CT/NT

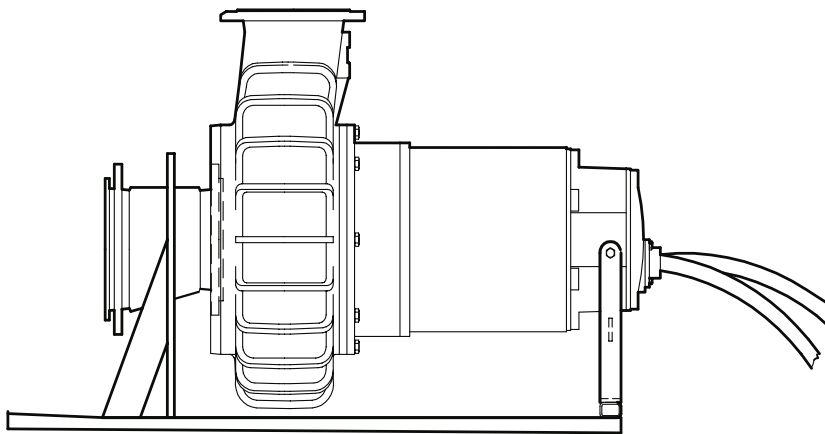
CT/NT 3300



30392A

5.5 CZ

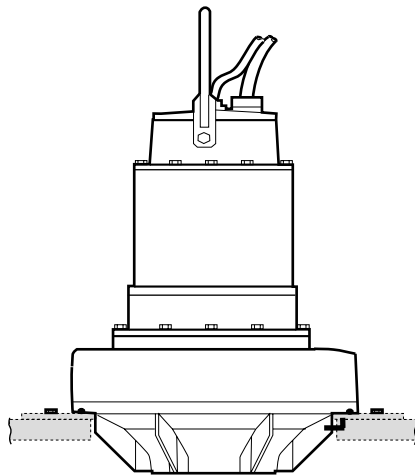
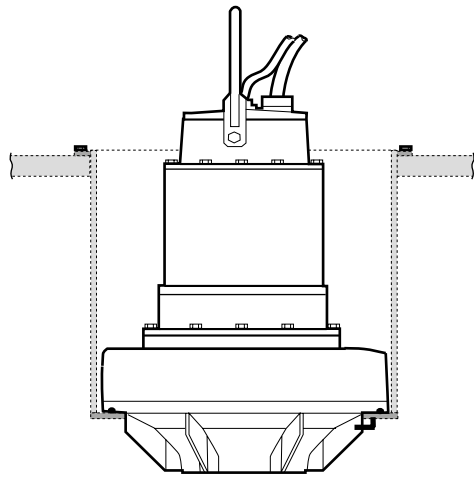
CZ 3300.091/181



30522

5.6 LL/NL

LL/NL 3300.091/181



30430

5.7 3300.091/181/280

Pos. No	Part. No	Denomination	Qty/Version		
			091	181	280
205	444 71 02	Discharge con.stat. IN/OUT 150/200 MM	1		
206	255 47 01	Ring	2		
207	661 54 00	Guide bracket unit GALVANIZED	1		
207	661 54 01	Guide bracket unit STAINLESS	1		1
209	305 79 00	Sliding bracket	Bell mouth Installation P LT Hydraulic: C N	1	
209	416 54 00	Sliding bracket	Installation P		1
210	84 34 37	Hexagon head screw M20X110-A2-70	2	2	
210	81 49 65	Hexagon head screw M20X110-A4-70			2
211	309 80 00	Discharge connection 8"	Installation S HT Hydraulic: C DN 200	1	1
211	295 57 00	Discharge connection	Installation S HT Hydraulic: C DN 150	1	1
211	379 32 00	Discharge connection	Installation S MT Hydraulic: C N DN 200	1	1
211	457 68 00	Discharge connection "LT" LOW HEAD DN 300	Installation S LT Hydraulic: N C DN 250	1	1
211	429 70 00	Discharge connection	Installation S HT Hydraulic: C DN 150		1
211	491 98 00	Discharge connection	Installation S MT Hydraulic: C DN 200		1
212	84 34 32	Hexagon head screw M20X70-A2-70	8	8	
212	84 34 34	Hexagon head screw M20X80-A2-70	12	12	
212	81 49 60	Hexagon head screw M20X70-A4-70			8
212	81 49 62	Hexagon head screw M20X80-A4-70			12
213	82 35 26	Plain washer 20-A2-A-170	4	4	
214	84 34 30	Hexagon head screw M20X60-A2-70	2	2	
214	81 49 58	Hexagon head screw M20X60-A4-70			2
215	82 23 62	Hexagon nut M20-A2-70	12	12	
215	82 23 38	Hexagon nut M20-A4-70			12
216	295 64 00	Gasket 6"	1	1	
216	84 65 82	Gasket 250 PN10	1	1	
216	380 25 01	Gasket 370 MM	1	1	
216	295 64 01	Gasket	Installation S HT Hydraulic: C DN 150		1
216	416 66 00	Gasket	Installation S MT Hydraulic: C DN 200		1
217	437 88 01	Stand compl. S/T INSTALLATION	Discharge connection Installation T LT MT Hydraulic: C N Drilled according to : EN 1092-2 tab. 8 DN 400	1	1
217	437 88 01	Stand compl. S/T INSTALLATION	Discharge connection Installation T MT Hydraulic: C Drilled according to : EN 1092-2 tab. 8 DN 300		1
217	649 11 00	Stand compl.	Installation S HT Hydraulic: C DN 150		1
218	84 34 13	Hexagon head screw M16X100-A2-70	8	8	
218	82 01 11	Hex.socket hd screw M16X70-A2-70	8		
218	84 34 05	Hexagon head screw M16X50-A2-70	8	8	
218	84 34 11	Hexagon head screw M16X80-A2-70		8	
218	81 49 39	Hexagon head screw M16X80-A4-70			8
218	81 55 47	Hexagon head screw M16X100 A4-70			8

Pos. No	Part. No	Denomination	Qty/Version		
			091	181	280
220	437 89 01	Suction pipe unit Discharge connection Installation T LT MT Hydraulic: C N Drilled according to : EN 1092-2 tab. 8 DN 400	1	1	
220	437 89 05	Suction pipe unit Discharge connection Installation T LT MT Hydraulic: C N Drilled according to : ANSI B16.1-89 DN 400	1	1	
220	437 89 07	Suction pipe unit Discharge connection Installation T LT MT Hydraulic: C N Drilled according to : EN 1092-2 tab. 9 DN 400	1	1	
220	320 06 01	Suction pipe unit Discharge connection Installation T MT Hydraulic: C Drilled according to : EN 1092-2 tab. 8 DN 400	1	1	
220	320 06 05	Suction pipe unit Discharge connection Installation T MT Hydraulic: C Drilled according to : ANSI B16.1-89 DN 400	1	1	
220	320 06 07	Suction pipe unit Discharge connection Installation T MT Hydraulic: C Drilled according to : EN 1092-2 tab. 9 DN 400	1	1	
220	384 74 01	Suction pipe unit Discharge connection Installation T MT Hydraulic: C Drilled according to : EN 1092-2 tab. 8 DN 300	1	1	
220,3	274 48 00	Gasket	1	1	1
220	384 74 05	Suction pipe unit Discharge connection Installation T MT Hydraulic: C Drilled according to : ANSI B16.1-89 DN 300	1	1	
220	384 74 07	Suction pipe unit Discharge connection Installation T MT Hydraulic: C Drilled according to : EN 1092-2 tab. 9 DN 300	1	1	
220	272 82 06	Suction pipe unit DN200 (8") HIGH HEAD"HT" Discharge connection Installation T HT Hydraulic: C Drilled according to : EN 1092-2 tab. 8 ANSI B16.1-89 DN 200	1	1	
220,1	81 52 49	Hexagon head screw	4	4	
220,2	274 45 00	Cleaning door	1	1	
220	272 82 07	Suction pipe unit DN200 (8") HIGH HEAD"HT" Discharge connection Installation T HT Hydraulic: C Drilled according to : EN 1092-2 tab. 9 DN 200	1	1	
220	492 02 01	Suction pipe unit Discharge connection Installation T MT Hydraulic: C Drilled according to : EN 1092-2 tab. 8 DN 300			1
220,1	81 41 56	Hexagon head screw M12X35-A2-70			4
220,2	492 03 01	Cleaning door			1
220,5	492 00 00	Suction pipe			1
220	492 02 05	Suction pipe unit Discharge connection Installation T MT Hydraulic: C Drilled according to : ANSI B16.1-89 DN 300			1
220	492 02 07	Suction pipe unit Discharge connection Installation T MT Hydraulic: C Drilled according to : EN 1092-2 tab. 9 DN 300			1
221	84 65 81	Gasket 350 PN10	1		
221	84 65 80	Gasket 300 PN10	1		
221	84 65 82	Gasket 250 PN10	1	1	
221	295 64 00	Gasket 6"	1	1	

Pos. No	Part. No	Denomination	Qty/Version		
			091	181	280
221	345 44 00	Gasket 250 PN10	1	1	
221	84 65 81	Gasket 350 PN10		1	
221	84 65 80	Gasket 300 PN10		1	
221	416 66 00	Gasket			1
222	84 34 34	Hexagon head screw M20X80-A2-70	16	16	
222	84 34 30	Hexagon head screw M20X60-A2-70	12	12	
222	81 49 58	Hexagon head screw M20X60-A4-70			12
223	81 41 56	Hexagon head screw M12X35-A2-70		2	
229	667 40 01	Sticker	2		2
229	667 40 01	Sticker		2	
300	83 58 57	Alarm unit "MINCAS" II	1		
300	83 58 57	Alarm unit "MINCAS" II		1	
300	83 58 57	Alarm unit "MINCAS" II			1

6 Service Parts

6.1 3300/091/181/280

Pos. No	Part. No	Denomination	Qty/Version		
			091	181	280
800	80 32 41	O-ring kits 3300.090,091,180,181	1	1	
900	601 89 24	Basic repair kit 3300.090,091,180,181	1	1	
901	90 17 52	Oil ISO VG 32	13	13	
901	90 17 52	Oil ISO VG 32			13
902	90 20 54	Grease	*	*	*



ООО «Бауманс Груп» - официальный партнер фирмы Flygt в России.

Тел: +7 495 121 49 50

Эл. почта: info@baumgroup.ru

Сайт: www.baumgroup.ru